



ALPADIA
LANGUAGE SCHOOLS
by Kaplan International

**MONTREUX
LYON
BERLIN
FREIBURG**



Language Courses Abroad

Immersive French and German
language study programmes (16+) in
Switzerland, France and Germany

www.alpadia.com

2023

Study abroad with Alpadia

Our programmes are designed to meet the widest variety of needs and preferences. No matter what the need is, Alpadia has a programme to cover it:

Language courses for students 16+



ACADEMIC AND CAREER PATHWAYS

For students looking for an academic or a professional challenge, discover our extensive Pathways programmes designed to help you enrol into a prestigious European university or help you expand your career and relocate to Germany. Find out more in our dedicated Pathways brochure!



ENGLISH COURSES

With the largest network of schools in the English-speaking world, set in unforgettable destinations across five countries, we offer a great variety of immersive English courses! Explore all our options.

Language camps for students 8-17



LANGUAGE CAMPS

All-inclusive fully immersive spring, summer and fall camp programmes in Switzerland, France, Germany and England offering English, French and German courses! Discover all of our options in our brochures.

Click on any brochure to find out more or visit www.alpadia.com



Karine Lizotte
General Manager

Dear Students,

Firstly, I would like to thank you for even taking the first step of opening and reading our brochure - I understand these days students have many different options for learning a language, but I firmly believe that by choosing Alpadia you would be making the perfect decision for your learning journey.

As part of Kaplan International Languages, a global leader in international education, together we have over 100 years of expertise in helping students from all over the world achieve their goals and get real results. Offering the ultimate student experience is the inspiration for everything we do – studying with Alpadia is about so much more than just memorizing grammar and vocabulary, it is an enriching life experience where you will fully immerse yourself in the local culture, developing and practicing your new skills in everyday life.

Every week we welcome new students from all over the world, so you will soon be making new friends who will join you on your journey, discovering new places to visit in our beautiful and exciting locations. And if you ever need advice or assistance when you arrive our highly motivated Student Support team in school will be there for you.

With one of the richest all-inclusive activity programmes on the market, we offer something for everyone to learn, grow and have fun. We look forward to sharing this adventure with you!

Content

Why choose Alpadia?	6
Studying a foreign language	8
Your progress with Alpadia	10
Courses adapted to your needs	12
Work and Study	14
Languages & volunteering	16
Pathways Programmes	18
Certificates	20
Quality accommodation	22
Social activities programme	24
Full immersion experience	25

French Courses

Montreux 	26
Lyon 	30

German Courses

Berlin 	34
Freiburg 	38

General Information	42
Terms & Conditions	44
How to enrol	46

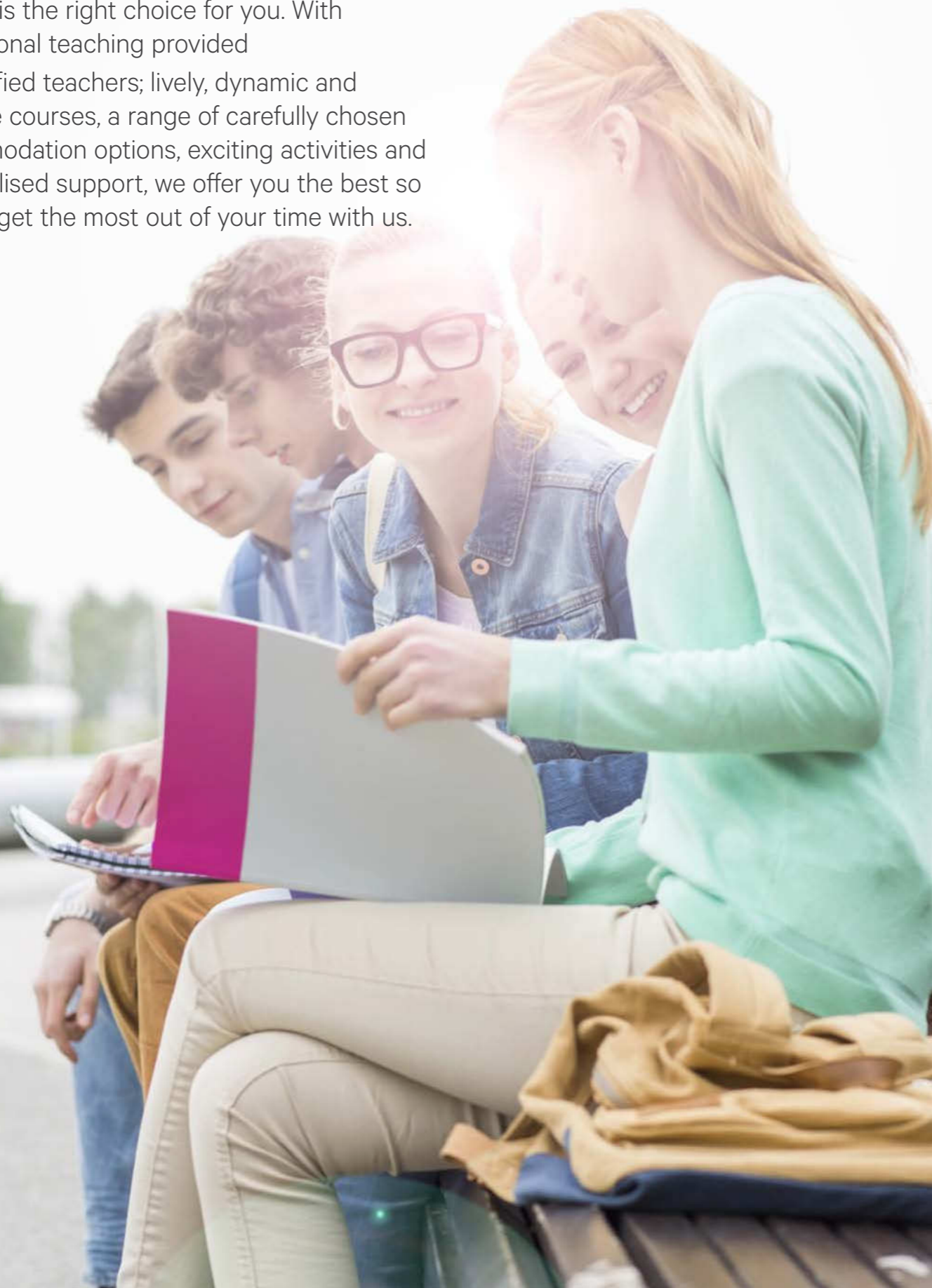
**SHARE A NEW
LANGUAGE**



Why choose Alpadia?

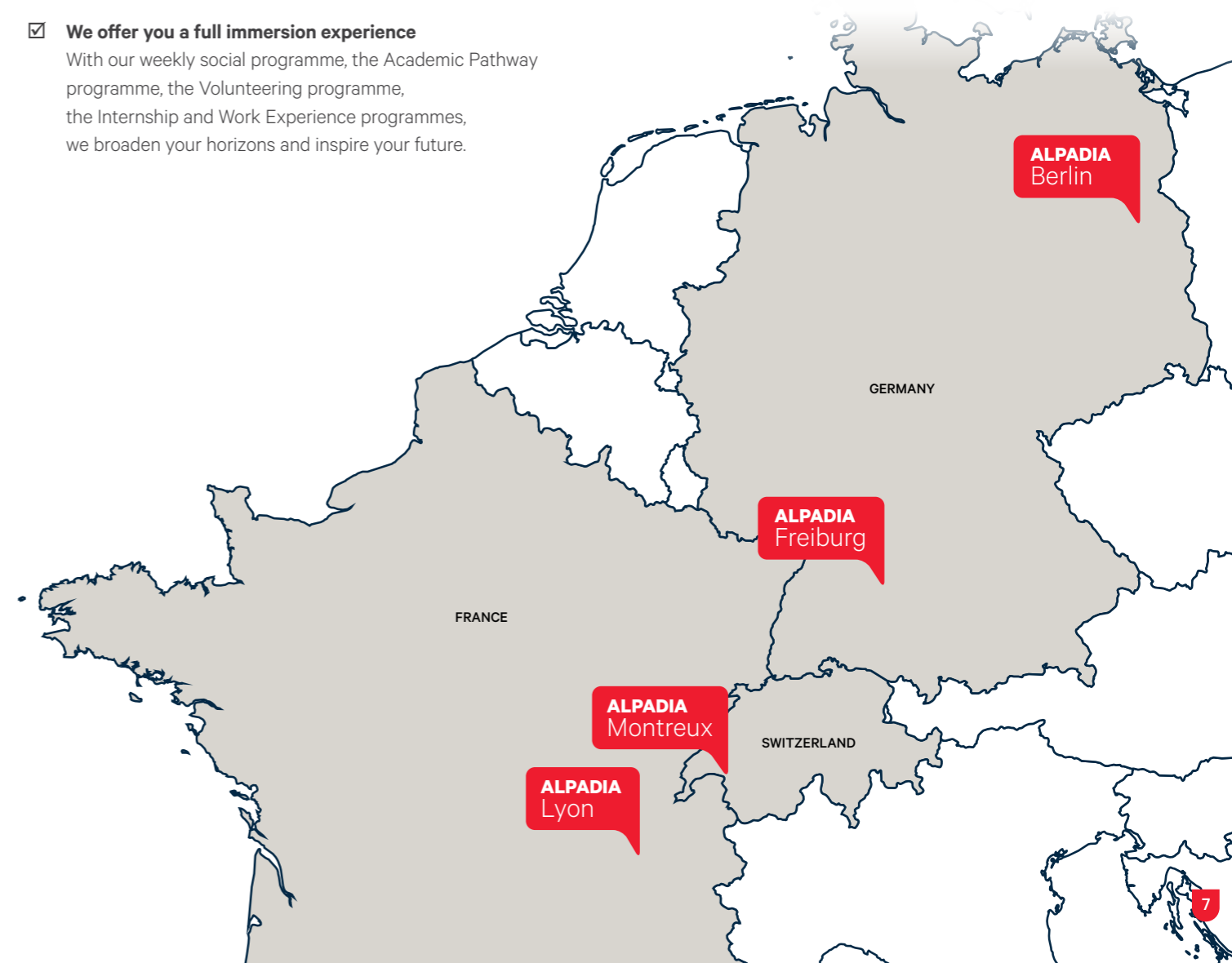
The quality of your stay is our priority.

Alpadia is the right choice for you. With professional teaching provided by qualified teachers; lively, dynamic and effective courses, a range of carefully chosen accommodation options, exciting activities and personalised support, we offer you the best so you will get the most out of your time with us.



- ✓ **We are Alpadia by Kaplan International Languages!**
Providing language education to students from all over the world since 1996, Alpadia Language Schools is a leading company offering Swiss-quality French and German language immersion mixed with a healthy dose of adventure and entertainment. Together with Kaplan we have over 100 years of experience in language education!
- ✓ **We are flexible and adapt to our students' needs**
From group courses to private lessons, from exam preparation to work internships, from online sessions to academic pathway preparation, we provide a rich diversity of course types adapted to your learning objectives. Lessons start every Monday, with specific dates all year round for absolute beginners.
- ✓ **We provide an optimal learning environment**
Providing unforgettable memories, a quality learning experience and new discoveries, our schools create an environment that is stimulating, dynamic and inspiring, allowing students to maximize their stay with us while experiencing an enjoyable language course.
- ✓ **We offer fantastic destinations**
For our French and German language courses we have selected dynamic and lively locations with plenty of sights to discover and explore. Our destinations offer students diversity and fun!
- ✓ **We offer you a full immersion experience**
With our weekly social programme, the Academic Pathway programme, the Volunteering programme, the Internship and Work Experience programmes, we broaden your horizons and inspire your future.

- ✓ **We are international**
With over fifteen world-renowned accreditations and certifications, we have the stamp of approval from leading educational institutions worldwide, validating the quality of our services. Each year, our schools welcome over 6,000 students from all over the world, including Europe, the Commonwealth of Independent States (CIS), Asia & the Pacific, the Americas, Africa and the Middle East, bringing together diverse cultures to help nurture an expansive worldview.
- ✓ **We help every step of the way**
Our dedicated customer service and student support teams are there every step of the way to make sure you get the most out of your language stay. From enrolment to transfers, from accommodation to recommendations on where to grab the best food, you can rely on our staff to be helpful and attentive to your needs.
- ✓ **We support students to succeed**
From the very first morning at school you will begin your language course in the adapted class thanks to our pre-arrival online language placement test. As a result of our effective teaching methods, our language schools boast an average exam success rate of 97%.



Studying a foreign language

Make rapid progress with Alpadia.

Our schools offer a modern and effective teaching method delivered by qualified teachers, with well-planned and motivating lessons adapted to all language levels and designed to allow for maximum interaction between the teacher and students.

Effective teaching methods

To achieve the best results:

- a pre-arrival online language placement test is taken so you can start learning at the right level from the first day you arrive at school
- we offer effective and high-quality teaching methods
- a clear and efficient teaching plan is provided
- communication is prioritised with clearly identified objectives and the use of interactive activities
- class size is limited to 12/14 students and 8 students for mini-groups, which means that each student can take an active part in the lessons
- the approach to language teaching is based on achieving concrete, operational linguistic aims, and not on exercises and automatic reflexes acquired out of context
- we help you develop your know-how and be encouraged to use it in practical situations
- various recognised FLE (French as a Foreign Language) and DaF (German as Foreign Language) methods are used, referring regularly to the news as well as other resources available for use in a multicultural class
- teachers encourage students to use the language they are learning as much as possible both inside and outside school in order to maintain full immersion in the language

Qualified teachers

Teachers are chosen for their necessary qualifications and for:

- their experience teaching a foreign language
- their enthusiasm and ability to create exciting and interactive lessons
- the attention they pay to each student
- their lively and personalised teaching style that guarantees long-lasting progress

Course structure



Group
max. 12/14 people



Mini-group
max. 8 people



Private

With a choice of courses ranging from the standard 20 lessons per week, to an extensive 30 classes with our Premium 30 or Combi 5/10 courses, we provide students with a selection to choose from. Whether you want to experience group classes or private tuition, online lessons or mini-group classes, Alpadia delivers numerous options adapted to your needs and availability. From standard language courses, to intensive preparation for university, from volunteering to work internships, we have the experience and expertise to support you in your language development helping you achieve your desired objectives.

Languages for life

Learning a foreign language is a rewarding tool to be used throughout a lifetime. Being able to communicate in another language can provide new professional and personal opportunities, opening doors to foreign cultures and fresh experiences, contributing to career growth and an expansive worldview. Fluency in a foreign language not only gives you the chance to showcase yourself as a global citizen, but can also differentiate you from a pool of potential employees. In a competitive world, knowing another language will certainly give you an advantage over a candidate who only speaks one language.

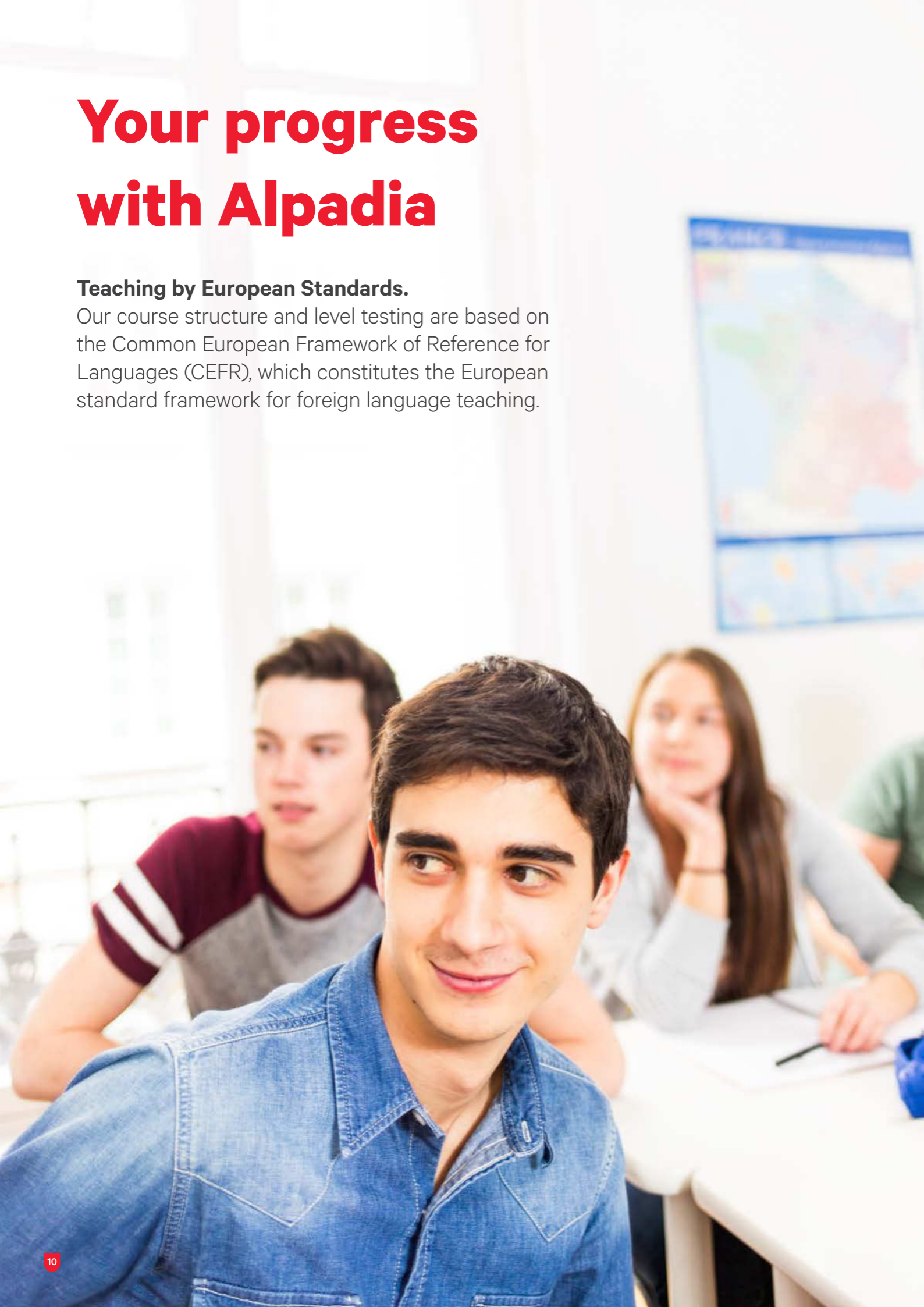
We look forward to being able to help nurture your investment in foreign language training. With our language learning courses combined with professional and educational experience, you can be sure that Alpadia will be your best ally in developing your language skills and applying them in your daily life.

Course certificate & official exams

At the end of your language study stay at Alpadia, you will receive a course certificate stating the level you have reached. You can also sit one of the many French or German exams available in our schools or at the official exam centres located close-by.

In terms of exams, Alpadia offers a particularly impressive range. The following exams or exam preparation courses are available at Alpadia: DELF/DALF, TCF, telc Deutsch, Goethe Zertifikat, TestDaF. Recognised by French and German official institutions, these certificates have an excellent reputation in the academic and professional worlds. Passing one of these exams is a great asset for your future. Whatever your level, aims and availability, you will find the exam that best suits you.





Your progress with Alpadia

Teaching by European Standards.

Our course structure and level testing are based on the Common European Framework of Reference for Languages (CEFR), which constitutes the European standard framework for foreign language teaching.

The CEFR Grid

After many years of research, the official Common European Framework of Reference for Languages (CEFR) document was published in 2001 by the Council of Europe. It helps determine the candidate's language level in terms of their knowledge in various skills groups.

Six different language levels were defined and serve as a reference in the language learning and teaching sector. An EU Council Resolution recommended the use of this Council of Europe grid to establish systems to determine language ability. Nowadays, it is an essential reference document.

The table below is a summary of the CEFR grid. It shows you the language level that you can achieve during your stay as well as the level required to take one of the official French or German exams offered at Alpadia schools.

Your CEFR* level	Description	French exam equivalence	German exam equivalence	Number of weeks to complete the level**	Time to achieve level for a beginner**
C2 VERY ADVANCED	Black Belt Master You can: <ul style="list-style-type: none">understand everything you read or hear in a range of subjects;understand the subtleties of the language and easily interpret complex documents;express yourself correctly and fluently without hesitation;debate complex subjects.	<ul style="list-style-type: none">Dalf C2TCFe-TEF	<ul style="list-style-type: none">Goethe Zertifikat C2TELC Deutsch C2	14+	900+ HOURS 60+ WEEKS
C1 ADVANCED	Autonomous university breakthrough level You can: <ul style="list-style-type: none">understand the specifics of complex texts and oral outputs on subjects relating to social and professional life;express yourself with confidence and precision when discussing a range of topics.	<ul style="list-style-type: none">Dalf C1TCFe-TEF	<ul style="list-style-type: none">Goethe Zertifikat C1 (ZMP)TELC Deutsch C1 Hochschule & TELC Deutsch C1 + BerufTestDaF 4 & TestDaF 5Deutsche Sprachprüfung für den Hochschulzugang (DSH)	12	690 HOURS 46 WEEKS
B2 UPPER INTERMEDIATE	Advanced professional breakthrough level You can: <ul style="list-style-type: none">understand detailed information in texts or oral output dealing with a familiar, concrete or abstract topics;express yourself clearly about subjects that you are interested in.	<ul style="list-style-type: none">Delf B2TCFe-TEF	<ul style="list-style-type: none">Goethe Zertifikat B2TELC Deutsch B2TestDaF 3TELC Deutsch B2 + Beruf	10	510 HOURS 34 WEEKS
B1 INTERMEDIATE	Personal breakthrough level You can: <ul style="list-style-type: none">understand the important information in texts and oral output about known or expected situations;express yourself with ease on subjects dealing with everyday life.	<ul style="list-style-type: none">Delf B1TCFe-TEF	<ul style="list-style-type: none">Zertifikat Deutsch (ZD)TELC Deutsch B1 + BerufGoethe Zertifikat B1	8	360 HOURS 24 WEEKS
A2 UPPER ELEMENTARY	Advanced basic level You can: <ul style="list-style-type: none">understand practical information in simple messages of everyday life;make yourself understood in familiar and expected situations.	<ul style="list-style-type: none">Delf A2TCFe-TEF	<ul style="list-style-type: none">Start Deutsch 2TELC Deutsch A2 + Beruf	8	240 HOURS 16 WEEKS
A1 ELEMENTARY	Basic level You can: <ul style="list-style-type: none">understand short phrases if known or repeated;express your basic needs;identify and reproduce single words or memorised expressions.	<ul style="list-style-type: none">Delf A1TCFe-TEF	<ul style="list-style-type: none">Start Deutsch 1	8	100 HOURS 8 WEEKS

*Common European Framework of Reference for the teaching of foreign languages. Duration varies from a level to another
**Approximate duration, with a Standard course. The level achieved by each student depends upon their individual capabilities, investment and diligence.
For a more in-depth progression, select an Intensive 25 or Premium 30 course.

Courses adapted to your needs

Your objectives are our main priority.

We offer various course types so that you can find the one that best suits your specific language need.

In order to guarantee the best teaching quality, our group courses include a maximum of 12/14 participants.



STANDARD 20

Levels Beginner to advanced **A1* > C1**
Duration 1 to 46 weeks
Lessons 20 per week
Start dates Every Monday, all year round

Our Standard 20 courses are an excellent choice if you want to improve your general linguistic communication skills and still have free time on your hands. Classes usually take place in the morning, so that you can make the most of your time off in the afternoon and take part in the activities that the school offers.

INTENSIVE 25

Levels Beginner to advanced **A1* > C1**
Duration 1 to 46 weeks
Lessons 25 per week – Standard 20 + 5 oral communication
Start dates Every Monday, all year round

The Intensive 25 course differs from the Standard 20 course in that it offers a more in-depth study of the language thanks to five additional lessons per week dedicated to oral communication. You'll be then able to improve your communication skills through role-plays and simulation exercises.

PREMIUM 30

Levels Beginner to advanced **A1* > C1**
Duration 1 to 46 weeks
Lessons 30 per week – Intensive 25
+ 5 written communication in mini-group
Start dates Every Monday, all year round

This Premium 30 course is suitable for motivated students wishing to make rapid progress. The sixth daily lesson added to the Intensive 25 course is focused on writing skills organised in a mini-group with a maximum of 8 participants. This is a quick and effective option to improve your oral and written communication skills.

PRIVATE & ONLINE LESSONS

Levels Beginner to advanced **A1* > C2**
Duration Tailor-made
Lessons Intensity according to set objectives
Start dates Throughout the year**

**except in July and August

With your private teacher, you will work specifically on the skills you wish to develop and progress at your own pace. Private tuition may cover specific topics including culture, business, finance and healthcare, preparing you for specific communication situations you may encounter in your field of activity. It can either be physical courses held at school or online lessons organised from home or office.

* Specific start dates for absolute beginners > A1

Minimum duration for A1 absolute beginners is 2 weeks. Please consult our centre pages for specific information on course start dates.

COMBI 5 & 10 courses

Levels **Combi 5** Beginner to advanced **A1* > C1**
Combi 10 Beginner to advanced **A1* > C1**
Duration 1 to 46 weeks
Lessons 25 or 30 per week – Standard 20 + 5 or 10 private lessons
Start dates Every Monday, all year round

This course is designed for students who wish to combine a group course with private lessons in order to acquire a deeper knowledge of the language. Thanks to tailor-made activities, the course will prepare students for future language challenges in various domains.

EXAM PREP 30

Levels Intermediate to advanced **B1 > C1**,
see page 20-21 "Certificates"
Duration 4 weeks
Lessons 30 per week – Standard 20
+ 10 exam preparation in mini-group with 8 students max.
Start dates According to exam date

Ideal for students wishing to prepare intensively for an exam, this programme includes 2 daily preparatory lessons, in addition to the Standard 20. Class size is limited to 8 students in order to guarantee optimal effectiveness.

ACADEMIC PATHWAY

University Pathway

Levels Beginner to Advanced **A1* > B2 C1**
Duration 12 to 46 weeks
Lessons 20, 25 per week
Programme **University 20: U20 / University 25: U25**
A1* > C1 46 weeks **A2 > C1** 38 weeks
B1 > C1 30 weeks **B2 > C1** 22 weeks

Start dates According to exam date

All students join their Intensive or Standard course for the necessary duration followed by four weeks of Exam Prep prior to their language exam. This programme is ideal for students who want to pursue their academic studies in Germany, France or Switzerland. For more information, **refer to our dedicated pathways brochure.**

Studienkolleg Preparation

Levels Minimum B2 to enter
Duration 4 weeks
Lessons 20 per week
Programme Studienkolleg Introductory module
Start dates 06.03 / 05.06 / 30.10.2023
Programme Studienkolleg Extension (Top-up) module
Start dates 03.04 / 03.07 / 27.11.2023

In order to prepare students in the best way possible for the entrance test for Studienkolleg we have designed two modules of preparatory courses with a focus on mathematics in German and practicing mock tests.

CAREER PATHWAY

Our Career Pathway is specifically designed to offer professionals from around the world expert guidance for a smooth transition to Germany. For more information on Career Pathway courses, **refer to our dedicated pathways brochure.**

Schedule

The table below indicates the weekly schedule of lessons in the mornings, from Monday to Friday. However we may organise classes in the afternoon at different times during the year depending on the schools' capacity, students' nationality mix, and their language level.

PATHWAY PROGRAMMES						
LESSONS	INTENSIVE 25	STANDARD 20	PREMIUM 30	EXAM PREP 30	COMBI 5	COMBI 10
1 st to 4 th	General linguistic skills	General linguistic skills	General linguistic skills	General linguistic skills	General linguistic skills	General linguistic skills
5 th	Oral communication		Oral communication	Exam preparation in mini-group	Private course	Private course
6 th			Written communication in mini-group	Exam preparation in mini-group		Private course

1 lesson = 45 minutes

Work and Study

Take your language course further!

With our work internship, employment and volunteer programmes, you can take your language courses to a higher level.

Whether you are interested in tourism or accounting, sports or design, we have ties with local businesses that can offer you exciting opportunities to expand your professional and personal development.

Language immersion programme

From accommodation to activities, excursions to events, we make sure our students get the most out of their immersion experience with us.

- we provide students the opportunity to live with a local family or in a shared student apartment in order to achieve the most exposure to the foreign language and culture
- students can choose from a variety of after class activities and excursions where practising the learned language is strongly encouraged and new friendships are forged
- with several options for language learning combined with professional employment, work internships, volunteering and university preparation, we can guarantee experiences that help students acquire and thoroughly develop their language skills in a professional or educational environment

Workshops & masterclasses

Learning a language goes far beyond simply participating inside a classroom, but also encompasses everyday scenarios.

To help students adapt to foreign administration and cultures, we hold workshops and masterclasses once a week to guide students on how to:

- open a bank account
- set-up various insurance policies
- write an engaging CV
- prepare for a job interview
- fill in a tax declaration form
- give an oral presentation
- prepare for an exam



Languages & work experience

Expand your professional development and your CV

Learning a language followed by employment is a sure way to excel and develop your language skills to the max. We will help you write your CV, apply for jobs and prepare you for your interview. With our network of local partners, we can assist you to attract the right employers for your skillset. You will improve your level dramatically by being integrated into a company where you have to communicate in the learned language in everyday professional situations.

Requirements: Min. B2 level – Open to 18+ years old, EEA and Swiss citizens, residents, or working holiday visa holders. Min. 6 weeks of Standard 20 course to begin work placement. Begins every Monday / Registration min. 4 weeks in advance.



Languages & internship

Experience a professional environment while expanding your knowledge

This programme allows you to put into practice and thoroughly implement the language skills acquired during your course with us, while gaining valuable work experience. This rewarding experience will help you improve fluency in the language and build confidence. Alpadia assists you every step of the way, from helping with your CV to preparing you for the interview process.

Requirements: Min. B2 level – Open to 18+ years old, EEA and Swiss citizens, residents, or working holiday visa holders. Min. 6 weeks of Standard 20 course to begin internship in Switzerland and Germany and min. 12 weeks of Standard 20 in France. Begins every Monday / Registration min. 4 weeks in advance.



Languages & volunteering

Develop your sense of community

This programme allows you to contribute your time to a worthy cause while applying and fine-tuning your language skills. We will help you find the mission that inspires you and assist you in joining the volunteer project. With a variety of options available, you can gain valuable experience with the learned language and experience a temporary professional activity within a non-profit organisation. See next page for more details.

Requirements: Min. B1 level – Open to 18+ years old, EEA and Swiss citizens, residents, or working holiday visa holders. Min. 6 weeks of Standard 20 course to begin volunteer project. Begins every Monday / Registration min. 4 weeks in advance

Languages & volunteering

Enjoy sharing your experience and skills!

We believe in active citizenship. It depends on us to make the world a better place for all. Through education and engagement, contribution and community, we inspire our futures and those of the new generation. Available in Germany, France and Switzerland.

Volunteer programmes per destination

Active citizenship is about donating our time and skills to benefit the community, contributing to making this world a better place for all. Alpadia partners with reputable organisations that are dedicated to support both the volunteers and non-profit associations to meet their needs.

Lyon

French courses + volunteering in France

Alpadia Lyon collaborates with "France Bénévolat" to offer its students the best volunteering options. "France Bénévolat" is a national network dedicated to welcoming and guiding volunteers through the selection of options available. Created in 2003, it has been officially granted the status of Public Utility in 2010. We help volunteer candidates to connect with non-profit organisations, enabling them to find adequate missions based on their interests, skills, localisation and the time they are willing to contribute.

Examples of missions include tutoring, social work, meal preparation, administrative support, etc.



www.francebenevolat.org

Montreux

French courses + volunteering in Switzerland

Alpadia Montreux cooperates with "Bénévolat Vaud". Supported by the Canton of Vaud, "Bénévolat-Vaud's" mission is to develop and support associations, volunteering and mutual aid in the canton of Vaud. The organisation acts as a link between people who wish to donate their time and associations that are looking for volunteers to develop their activities.

Example of missions include being an activity leader of creative, cultural and leisure activities, working in public relations & media, assisting those with disabilities, photography for local and grass-roots organisations, etc.



www.benevolat-vaud.ch

Berlin

German courses + volunteering in Germany

Alpadia Berlin partners with two organisations. The first one is "Caritas Germany", the largest welfare association in Germany. The second one is "Give Something Back to Berlin", an award-winning project platform and network fostering community integration, intercultural dialogue and participation among Berlin's diverse migrant populations.

Example of missions include social activities, language teaching, cooking, music school, etc.



www.caritas-germany.org



gsbtb.org

Freiburg

German courses + volunteering in Germany

Alpadia Freiburg partners with "Caritas Germany", the biggest charitable organisation in Germany, whose headquarters is in Freiburg, Germany.

With over 500'000 volunteers in the country, they assist around 12 million people in Germany every year!

Example of missions include community service, assisting seniors, training and integration, refugee aid, etc.



www.caritas-germany.org

Pathway Programmes

Ready for the exciting challenges ahead!

Whatever your professional or academic goals, Alpadia can help you get there with our extensive Pathways programmes. Request our dedicated Pathways brochure for more information about our programmes.



Academic Pathway Programme

University entrance^A
Starting in October or March



Take your education further!

Alpadia offers international students an optimal pathway to a wide range of public and private universities. Our academic pathway programme is designed to guide participants through every step of the way, starting with a personalised roadmap, followed by admissions, visa assistance, language learning, and finally, successful entry to the student's desired university programme in Europe.

Benefit from:

- Access to 400+ public and private universities offering over 20.000+ Bachelor and Master degrees, covering all fields of studies.
- Specialised high-quality language courses to obtain academic C1 level.
- Full expert assistance throughout the admission, visa, language learning and university placement process.

Student assistance every step of the way

We propose three optional packages to help students successfully complete their academic pathway:

1. Free pre-evaluation

Alpadia provides a free assessment for every student to ascertain their eligibility for the academic pathway programme and determines a suggested plan of studies.

2. Application and visa assistance

Alpadia helps students with their university application, obtaining a Conditional Letter of Acceptance (CLA) and end-to-end visa assistance services to international students.

Mandatory for students who require a Study Applicant Visa

3. University placement

To complete the assistance procedure, Alpadia guides students through the complex process of obtaining admission to the student's desired university programme.

Please check our individual school pages for package prices.

Career Pathway Programme



Land your dream job in Germany!

With an ageing population and a drastic need for specialists, Germany facilitates the migration of skilled workers by opening access to the German labour market to international professionals.

Our Career Pathway is specifically designed to offer professionals from around the world expert guidance for a smooth transition to Germany, an optimised job search and a placement strategy, thanks to our expertise, experience and an extensive network of partner companies. We offer international professionals extensive support including securing a visa, arranging accommodation, learning German and finalising necessary paperwork. Our expert coaches guide applicants through a job search strategy and accompany them until they land their desired job.

Job-seeker assistance every step of the way

We propose five optional packages to help applicants successfully complete their career pathway:

1. Free pre-evaluation process

Alpadia provides a free assessment to ascertain eligibility for the career pathway programme and determines a personalised job entry roadmap.

2. Recognition & Visa process

Alpadia helps professionals with obtaining the right recognition certificate, necessary for visa and job application. Alpadia provides assistance in collecting necessary documents and filing for the right type of visa.

3. Arrival assistance

Whether you need an airport transfer, accommodation, or assistance with paperwork upon arrival, we'll be happy to help.

4. Career & relocation coaching

To complete the assistance procedure package, Alpadia guides skilled workers along every step of the way, from pre-evaluation through to landing their dream job.

5. Family reunion

If your partner, spouse and/or children plan on accompanying or joining you you after you've settled down, we'll help you with everything from family visa applications to finding local schools.

^A Most university degrees begin in October. Some courses may begin in March.

^B Optional Studienkolleg Mathematics preparation course – in Berlin only.

Certificates



Add an international dimension to your résumé.

Improve your language skills at Alpadia and return home with an official diploma. We offer a wide range of examination options and exam dates, with numerous sessions throughout the year.

This means you can enjoy optimum flexibility to take the exam of your choice at the time that suits you best.



Test in French language skills

The TCF is part of the new wave of modern “thermometer” exams. A simple, fast and efficient evaluation gives you a professional validation of your level of French. The TCF is a multiple-choice questionnaire. After the DELF/DALF, the TCF has become the most taken exam in French language schools.

Based on the CEFR for foreign languages, it has already achieved high recognition. Our schools in Montreux and Lyon are official TCF exam centres. The exam is offered 7-8 times a year at each school.

www.france-education-international.fr



The European Language Certificates

TELC GmbH is a branch of the German Adult Education Association, which is the largest provider of continuing education in Germany. TELC offers German exams for levels A1 to C2, which correspond to the levels of the Common European Framework of Reference for Languages and are recognised worldwide as proof of achievement. German TELC C1 Hochschule is recommended for students entering the Academic Pathway programme. Our schools in Berlin and Freiburg offer monthly TELC exam preparation courses for levels B1 / B2 / C1. Alpadia Berlin and Freiburg schools are TELC-accredited official exam centres. On request, our accredited examiners come to our exam centres in order to coach students and conduct the exam. We will take care of registering you for the exam.

www.telc.net



Test of German as a foreign language

The TestDaF examination and the TELC are the recommended exams for students wishing to enter our Academic Pathway programme in Germany. Comprised of a listening comprehension section, a reading comprehension section, a writing section, and an oral test, this exam takes place five times per year at our Berlin school.

Every participant receives a personalised certificate and gets separate marks for each of the four sections, which gives a more detailed picture of your language skills. The exam was developed on behalf of the Deutscher Akademische Austauschdienst (DAAD – German University and College Exchange Commission) and the Hochschulrektorenkonferenz (HRK – Conference of University and College Rectors) by a consortium made up of the FernUniversität in Hagen, the Seminary for Language Research at the Ruhr-Universität Bochum, the Goethe Institute e.V. Munich, and the Carl Duisberg Centres GmbH in Cologne.

www.testdaf.de



Fide test

The French fide test is a recognised proof of language issued by the Swiss State Secretariat for Migration (SEM). The test consists of an oral part and a written part and is required in Switzerland for naturalisation and permit applications.

Our school in Montreux is an official fide exam centre and the exam is offered 7-8 times per year.

www.fide-service.ch

Promotion of the German language and culture abroad

The Goethe-Institut was created by the German federal government to promote the German language and culture abroad. Goethe-Institut exams are internationally recognised by employers and continuing education institutions as proof of achievement. German exams offered by the Goethe-Institut correspond to the range of levels of the Common European Framework of Reference for Languages from A1 to C2. These exams are offered on fixed dates in regional testing centres located within direct proximity of the Berlin Alpadia school.

Five times a year, Alpadia Berlin offers Goethe Zertifikat preparation courses for levels B2 / C1.

www.goethe.de

Diploma in French Studies

The DELF (A1 to B2) and DALF (C1 and C2) are official diplomas awarded by the French National Ministry of Education in order to certify skills in French as a Foreign Language. They are made up of six independent diplomas corresponding to the six levels of the CEFR.

Therefore, students have the possibility to enrol directly for the exam of their choice. At each level, the four skills are assessed: writing, speaking, reading and listening. A version designed for teenagers is also available.

Officially recognised in more than 150 countries, the DELF/DALF diplomas are in high demand in academic and professional fields. These exams are offered five times a year in Montreux and eighth times a year in Lyon on fixed dates, in the regional exam centres located within direct proximity of the Alpadia schools.

As mentioned in the “course” pages, Alpadia offers DELF/DALF preparation courses for the levels: B1 / B2 / C1.

www.delfdalf.ch

www.france-education-international.fr

For information on the examination dates, please consult the “Dates & fees” section found on each of our all-year round language centre pages.

Quality accommodation

Choose the right place to stay.

This is essential to the success of a language study stay and this is why we take special care when selecting the range of accommodation options we offer students at our various course locations.

Whether you want to experience 100% language immersion with a host family or in a self-catering homestay, international life in a student apartment, complete independence in a studio or at a hotel, you will find the accommodation to best suit your needs.

Host family *from age 16*

Montreux / Lyon / Berlin / Freiburg

By living with a host family, your stay will take on another dimension. Learning the language becomes natural during meals or outings. Staying with a host family is a great way to learn about local culture, experience daily life with your hosts and learn everyday expressions and colloquialisms. We have excellent relationships with our host families and all of them meet our requirements in terms of quality.

Student apartment *from age 18*

Montreux / Lyon / Berlin / Freiburg

The student apartments are located in the town centre, close to our schools and various shopping areas, cafés and restaurants and they are well served by public transport. This accommodation option is particularly suitable for students wishing to enjoy greater independence while having contact with other students. The apartments offer comfortable double and single bedrooms. Shared facilities include a TV, a fully-furnished kitchen, a washing machine and wireless internet access.

Self-catering homestay *from age 18*

Berlin

This very popular accommodation allows more independent students to live in immersion with German people while enjoying some autonomy, as this is a self-catering option. Staying in a comfortable single bedroom, you will share the bathroom and communal areas with your flatmates and have access to the kitchen to prepare your meals. In Berlin, you will also take advantage of a wide range of international restaurants that offer great value for money.

Residence *from age 18 (from age 16 in Montreux)*

Montreux / Lyon / Berlin / Freiburg

Our carefully selected residences are ideally located in the city centre, within 30 minutes of the schools and are well served by public transport. In **Freiburg**, bedrooms have a private bathroom and space to study. Each floor provides the use of a shared fully-equipped kitchen. In **Berlin**, the residence features fully-furnished single rooms with kitchenette and private bathroom. In **Lyon**, single studios are equipped with a small kitchen and private bathroom. In **Montreux**, each studio benefits of a lounge area, double bed and fully equipped open kitchen. Each residence provides our students with in-house laundry facilities, space to study and free WiFi.

Studio *from age 18*

Montreux

Our centrally located studio includes a fully-equipped kitchen, a bathroom, a TV and internet connection. It represents an ideal accommodation option for couples and students looking for independence, tranquillity and a higher level of privacy and comfort.

Hotel and Bed & Breakfast *from age 18*

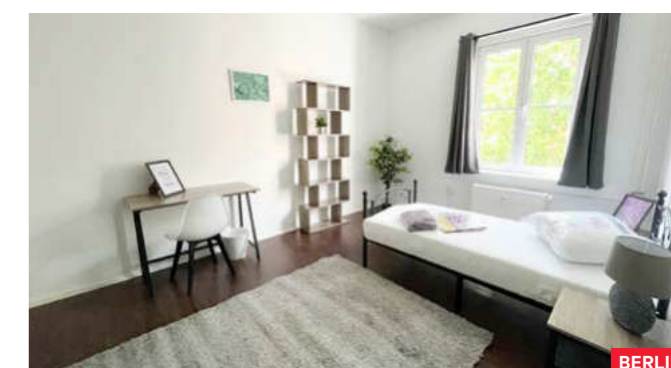
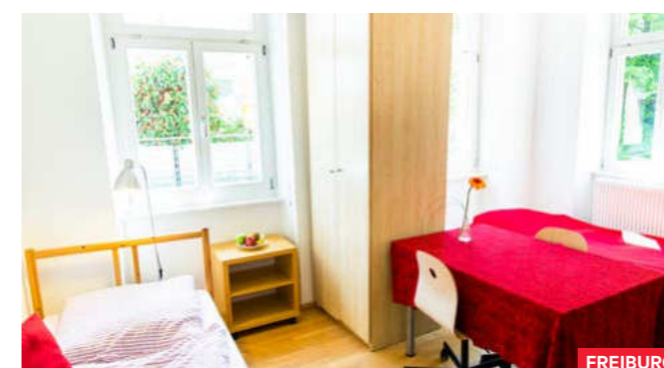
Montreux / Lyon / Berlin / Freiburg

We have selected different types of hotels for you, from the most basic to the most luxurious. These establishments are located in and around the city centre. If you are interested in this option, please contact us for more information.

Course without accommodation *from age 16*

Montreux / Lyon / Berlin / Freiburg

If you wish to arrange accommodation yourself, you can attend the classes and take part in the activities like the other students.



Social activities programme

Explore the city, make new friends, and gain a deeper immersion in the language with our exciting events and activities.

All our schools offer a packed schedule of things to do, from movie nights and dinners at local restaurants to tours of national landmarks and day trip. Whether you're a sports fan, an arts lover, a gourmet, or a thrill-seeker, our social program is full of opportunities to make your time at Alpadia unforgettable. Many activities are free of charge, but some will have an extra cost attached, such as transport.

SAMPLE WEEKLY PROGRAMME*

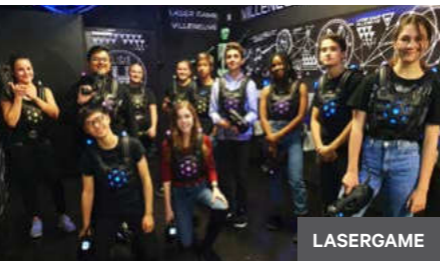
	Monday	Tuesday	Wednesday	Thursday	Friday	Saturday
Montreux	Movie at school	Free day	Tobogganing	Fondue party at School	Free day	Snowshoeing in Les Paccots
Lyon	Croix Rousse & Traboules Tour	Free day	Institut Lumière	Lasergame	Free day	Accrobranche
Freiburg	Sightseeing Tour	Indoor climbing	Bike Tour	Free day	Free day	Excursion to Münstertal
Berlin	Movie at School	Stammtisch	Sightseeing Tour	Free day	Free day	Excursion to Teufelsberg

* This is an example schedule, the exact number of activities and excursions may vary from one location to another and may be modified according to the weather or other unforeseen events.

SAMPLE PACKAGE ACTIVITIES



SAMPLE EVENING ACTIVITIES

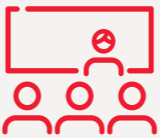


Full immersion experience

Practising the language both inside and outside the classroom, during breaks and activities maintains the full immersion experience in the language.

This creates opportunities for students to learn and exchange while strengthening cross-cultural communication.

OUR RECOMMENDED PACKAGE FOR A FULL IMMERSION EXPERIENCE



Intensive course 25

With a core foundation built on general linguistic skills, extra attention is given to verbal communication, helping you grasp the subtleties of the language.



Host family stay

Living with a family encourages you to push yourself out of that comfort zone and to practice your language skills as they promote a safe learning environment.



Alpadia activities

By participating at the activities proposed, you will gain confidence in your communications skills, while enjoying new friendships.



See what our students have to say!

I chose Freiburg, because I wanted to live in a small, beautiful city. Moreover, Freiburg is the green city of Germany! I like the school a lot, that's why it's the second time that I come here this year. I even have a German family now, with a German brother! There is a lot of cultural exchange between us. Sometimes I even cook Korean food for them. I'm very satisfied with the activities - I take part in every excursion and every week I'm looking forward to see what's next. The activities are varied and they are an excellent chance to get to know the students from other classes. The activity tutor also tells us many things about Germany, so every time I learn new things!

Soomin Park, Korea 🇰🇷



Montreux

The pearl of the Swiss Riviera



Montreux offers a gorgeous setting for a French language course. Located on the banks of Lake Geneva, at the foot of the Alps, the pearl of the Swiss Riviera enjoys an almost Mediterranean climate.

From the palm-lined quays to the intense blues of the lake, from the high summits of the nearby mountains to the UNESCO World Heritage-listed terraced vineyards of Lavaux, interspersed with picturesque villages, everything here contributes to the balanced beauty of the place.

It is no coincidence that this lakeside resort of 30,000 inhabitants has an international reputation. A town of rare dynamism, Montreux offers a very rich cultural, artistic and sporting agenda. Every year, tourists and visitors from all over the world come here to take part in the colourful events that give life to this beautiful area. In July, Montreux sways and dances to the rhythm of the famous Montreux Jazz Festival, while in winter, Switzerland's largest Christmas market bestows a magical atmosphere on the town. Every season here is extraordinary.

Key fact and Figures

Nationality mix

Americas	3%	<div></div>
Asia & Pacific	2%	<div></div>
CIS*	1%	<div></div>
Eastern Europe	1%	<div></div>
Middle East & Africa	1%	<div></div>
Western Europe	92%	<div></div>

*Commonwealth of Independent States

97%
of exam success rate

30
different nationalities

Montreux



The pearl of the Swiss Riviera

Our school in Montreux is on the main street on the edge of Lake Geneva. The beautiful promenade is surrounded by exotic plants, which help make Montreux one of the most visited places in French-speaking Switzerland. You can easily reach the school from your accommodation by bus or train with stations only five minutes away on foot.

The course centre has comfortable and bright classrooms, a cafeteria plus a fully-equipped kitchen and welcoming terraces where you can relax with friends. The size of Alpadia Montreux means that we are able to give students our personal attention and be there for you when you arrive and throughout your stay.




At the end of class, you can go straight onto the terraces by Lake

Geneva with the other students or visit the shops nearby.





Accreditations & certifications



Find out more online!

-  [fal.cn/alpadiamontreux](https://www.facebook.com/fal.cn/alpadiamontreux)
-  [@alpadialanguageschools](https://www.instagram.com/alpadialanguageschools)
-  [@alpadia_language_schools](https://twitter.com/alpadia_language_schools)

Key facts

	School	
	Minimum age	16
	Students/class	8-12
	Year of foundation	2003
	Address	
	Grand-Rue 42, 1820 Montreux, Switzerland	
	Courses	
	In group / Private	
	Exam preparation	DELTA/DALF
	Academic Pathway programme	
	Work experience programme	
	Internship & Volunteer programme	
	Exam Centre TCF	
	Accommodation	
	Host family	from age 16
	Student apartment	from age 18
	Studio	from age 18
	Residence	from age 16

	Transfer one-way price in CHF / Swiss Francs	
	Geneva Airport GVA (60 min.)	from 270
	Zurich Airport ZRH (150 min.)	from 910
	Geneva Train Station	from 270
	Zurich Train Station	from 910

Activities in Montreux

The Swiss Riviera and Montreux offer wide-ranging activities for you to enjoy in addition to your language classes. From spring to autumn, you can take part in numerous mountain and water sports during your French course in Montreux: climbing, paragliding, sailing, waterskiing, stand-up paddle or mountain-biking – the Riviera is a real sports paradise.

Take time out to visit the famous medieval Château de Chillon, sail on a hundred-year-old steamboat on Lake Geneva, or just stroll along the lakeside among the palm trees and exotic flowers. Between March and September, music festival fever hits the region, with highlights including Cully Jazz and Montreux Jazz.

In winter, just 30 minutes away from Montreux, you will find one of the world's largest ski resorts. "Les Portes du Soleil" has everything, from ice skating rinks to toboggan runs and snowshoe trekking. For four weeks in December, Montreux also plays host to Switzerland's largest and most famous Christmas market. Whenever you come, you will always find something to do in Montreux.



Fees in CHF / Swiss Francs

Start dates

Elementary to advanced levels, A1 > C1: Course starts every Monday

Start dates for absolute beginners, minimum 2 weeks booking:

16.01 / 20.02 / 20.03 / 17.04 / 15.05 / 12.06 / 10.07 / 07.08 / 04.09 / 02.10 / 30.10 / 27.11.2023

Bank holidays, lessons are not substituted (school closed):

26.12.2022 - 06.01.2023 / 07.04 / 10.04 / 18.05 / 29.05 / 01.08 / 18.09 / 25.12 - 05.01.2024

Group courses (French lessons)

High season supplement applicable to all fees

Lessons per week (lpw)	STANDARD 20 lpw	INTENSIVE 25 lpw	PREMIUM 30 lpw	COMBI 5 20+5 lpw	COMBI 10 20+10 lpw
1 week	330	415	570	980	1480
2-3 weeks	315	400	555	890	1465
4-7 weeks	295	385	540	870	1445
8-11 weeks	275	365	520	850	1425
12-23 weeks	255	345	495	830	1405
24-35 weeks	245	335	485	820	1395
36+ weeks	235	325	475	810	1385

Private courses & online lessons

Lesson fees

1 lesson = 45 minutes

1-4 lessons 155

5-9 lessons 130

10+ lessons 115

Exam preparation course for DELF B1 & B2, DALF C1

Organised at Alpadia Montreux

Lessons per week / lpw

30 lpw

4 weeks

2'020

IMPORTANT INFO

■ Available 4 weeks prior to the exam dates.

■ Exam fees not included.

Exam – DELF/DALF

Organised at the regional examination centre. Registration deadline: see www.delfdalf.ch

Levels, fees & dates: see www.alpadia.com

Exam – TCF & FIDE

Organised at the Alpadia Montreux school. Registration deadline: min. 1 month in advance

Levels, fees & dates: see www.alpadia.com

Academic pathway programme

Requirements: Entry level is determined by Alpadia online test when you enrol

Packages:

1. Pre-evaluation process

free

2. Application process*

825

3. University placement

495

Language level	Duration	U20	U25
A1 Beginner	46 weeks	12'190	15'870
A2 Elementary	38 weeks	10'070	13'110
B1 Pre-intermediate	30 weeks	8'400	10'650
B2 Upper Intermediate	22 weeks	7'920	8'580
C1 Advanced	12 weeks	4'320	4'680

*Mandatory for students who require a long term or a student visa.

French language + work experience/internship

Requirements: Level B2 / From 18 years old / Minimum duration: 2 months

Price: Course (as listed above) + CHF 605 placement fee

French language + volunteering

Requirements: Level B1 / From 18 years old / Duration: from 1 week to 6 months

Price: Course (as listed above) + CHF 110 placement fee

Accommodation

Weekly fees

From Sunday to Saturday

		1 week	2-3 weeks	4-7 weeks	8+ weeks
Host family ¹	B&B Single	295	285	275	250
	Half Board Single	310	300	290	265
	B&B Double	250	230	220	210
	Half Board Double	265	245	235	225
Student Apartment	no meals Single	325	300	290	280
	no meals Double	245	235	225	205
Studio	no meals Single	460	420	390	390
	no meals Double ²	365	335	310	310
Residence	no meals Single	460	420	390	390
	no meals Double ²	365	335	310	310

One extra night is available on arrival and/or on departure at 25% of the weekly accommodation rate; high season supplement does not apply to the extra night.
1) Specific diet weekly supplement: B&B: CHF 25 | HB: CHF 40
2) Only available for 2 participants booking this option together, fee per participant

Additional information

Included in the price: Tuition, learning material, online assessment test, Alpadia certificate, activity programme, student card, accommodation placement and taxes.

High season supplement: CHF 40 per week on course fees & CHF 45 per week on accommodation fees. For stays from Sunday 18th June until Saturday 19th August 2023

Pathway programme applicants are exempt from the high season supplement on course and accommodation fees

Additional Fees: Application fee: CHF 120, Courier fee: CHF 120, Weekly accident/health insurance fee: CHF 15 (for stays longer than 90 days, please contact us for more information), Late registration fee (2 weeks or less from the starting date): CHF 45, Migration Office Fee: CHF 95 (for stays longer than 90 days).

Lyon

The city of lights

With its university, art, culture, history, creation, gastronomy and contemporary dance, Lyon is a cosmopolitan city that is always pushing boundaries.

Lyon is just two hours from Paris, Marseille and Geneva on the TGV, the French high-speed train. The city also has an international airport that makes Lyon a perfect spot from which to discover Western Europe. This is a place with everything to entice you, including great culture, an impressive range of restaurants – from bouchons (traditional Lyonnaise restaurants) to Paul Bocuse’s prestigious venues – and a student population of 100,000.

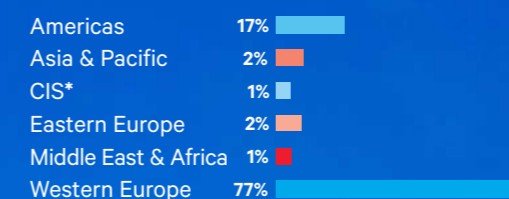
At night, the city sparkles; your evenings in Lyon are bound to be memorable.

From Bellecour to Terreaux, from St-Jean to St-Paul, from the Parc de la Tête d’Or to the Pentes de la Croix Rousse, its banks and pastel-coloured old districts resembling little villages are invitations to go shopping, enjoy peaceful walks or explore the area.

Discover a UNESCO-listed city famous for its silver and gold embroidered silks; enjoy the beauty and lose yourself in the energy and unique lifestyle. A French course in Lyon is a treat for all five senses.

Key fact and Figures

Nationality mix



*Commonwealth of Independent States

95%

of exam success rate

30

different nationalities



The city of lights

Our school is in the heart of the city's cultural and festive life in Lyon's centre. The beautiful 19th century building is located on the "Presqu'île" (peninsula), overlooking the Rhône and a short walk from the Saône. The school has spacious and bright classrooms with high ceilings.

Only a stone's throw away from the biggest square in Lyon, straight after class you can soak up the atmosphere in the numerous nearby cafés and restaurants, where Lyon's students meet.

The school has direct access to the best pedestrian shopping areas in Lyon and there is a subway station and a bus stop less than five minutes' walk away from the school.

Accreditations & certifications



Find out more online!

- fal.cn/alpadialyon
- [@alpadialanguageschools](https://www.alpadialanguageschools.com)
- [@alpadialanguage_schools](https://www.alpadialanguageschools.com)

Key facts



School

Minimum age	16
Students/class	8-12
Year of foundation	2006



Address

Quai Jules Courmont 6, 69002 Lyon, France



Courses

In group / Private	
Exam preparation	DELTA/DALF
Academic Pathway programme	
Work experience programme	
Internship programme	
Volunteer programme	



Accommodation

Host family	from age 16
Student apartment	from age 18
Residence	from age 18
Hotel-residence***/ hotel	from age 18



Transfer

one-way price in € / EUR



Lyon Saint-Exupéry Airport LYS (30 min.) from 160



Lyon Train station (15 min.) from 70

Activities in Lyon

Lyon offers an incredible range of options for you to enjoy during your French course. Boutiques, cinemas, exhibitions, concerts, sports centres, bars, restaurants, discos: so many opportunities for going out with friends, taking a stroll or partying!

A city with two thousand years of history, Lyon has plenty for keen historians, while food lovers are spoilt for choice in the city known as the French capital of gastronomy and famous for its bouchons. For some fresh air, there's nothing like spending time in the magnificent city centre Parc de la Tête d'Or. Out of town, the backcountry and Rhône countryside are glorious, whether for a walk, a cycling tour or a wine-tasting trip to sample the finest Beaujolais vintages.

Throughout the year, locals and tourists enjoy large-scale cultural and artistic events, including the famous Festival of Lights, dance and contemporary art festivals, jazz bars, street shows and discos on barges. If that is not enough, you can easily travel to Geneva, Paris or the French Riviera and enjoy fantastic excursions!



Fees in € / EURO

Start dates

Elementary to advanced levels, A1 > C1: Course starts every Monday

Start dates for absolute beginners, minimum 2 weeks booking:

09.01 / 06.02 / 03.04 / 02.05 / 26.06 / 24.07 / 21.08 / 18.09 / 16.10 / 13.11 / 11.12.2023

Bank holidays, lessons are not substituted (school closed):

26.12.2022 - 06.01.2023 / 10.04 / 01.05 / 08.05 / 18.05 / 29.05 / 14.07 / 15.08 / 01.11 / 25.12 - 05.01.2024

Group courses (French lessons)

High season supplement applicable to all fees

Lessons per week (lpw)	STANDARD 20 lpw	INTENSIVE 25 lpw	PREMIUM 30 lpw	COMBI 5 20+5 lpw	COMBI 10 20+10 lpw
1 week	230	290	350	655	1030
2-3 weeks	230	290	350	630	1030
4-7 weeks	220	280	340	620	1020
8-11 weeks	200	260	320	600	1000
12-23 weeks	190	245	310	590	990
24-35 weeks	185	240	305	585	985
36+ weeks	180	235	300	580	980

Private courses & online lessons

Lesson fees

1 lesson = 45 minutes

1-4 lessons 90 5-9 lessons 85 10+ lessons 80

Exam preparation course for DELF B1 & B2, DALF C1

Organised at Alpadia Lyon

Lessons per week / lpw 30 lpw

4 weeks 1540

IMPORTANT INFO

- Available 4 weeks prior to the exam dates.
- Exam enrolment fee included.
- Exam fees not included.

Exam - DELF/DALF

Organised at the regional examination centre. Registration deadline: see www.ilcf.net Levels, fees & dates: see www.alpadia.com

Exam - TCF & FIDE

Organised at the Alpadia Lyon school. Registration deadline: min. 1 month in advance Levels, fees & dates: see www.alpadia.com

Academic pathway programme

Requirements: Entry level is determined by Alpadia online test when you enrol

Packages:	1. Pre-evaluation process	free
	2. Application process*	825
	3. University placement	500

Language level	Duration	U20	U25
A1 Beginner	46 weeks	9200	11500
A2 Elementary	38 weeks	7600	9500
B1 Pre-intermediate	30 weeks	6450	7800
B2 Upper Intermediate	22 weeks	5830	6270
C1 Advanced	12 weeks	3180	3420

*Mandatory for students who require a Student Visa VLS-TS

French language + work experience/internship

Requirements: Level B2 / From 18 years old / Maximum duration 2 months

Price: Course (as listed above) + € 600 placement fee

French language + volunteering

Requirements: Level B1 / From 18 years old / Duration: from 1 week to 6 months

Price: Course (as listed above) + € 85 placement fee

Accommodation

Weekly fees From Sunday to Saturday

		1 week	2-3 weeks	4-7 weeks	8+ weeks
Host family ¹	B&B Single	220	210	200	190
	Half Board Single	275	265	250	240
	B&B Double	190	180	170	160
	Half Board Double	235	225	215	205
Student apartment ²	no meals Single	310	290	280	270
	no meals Double	225	205	195	185
Hotel Residence** ³	no meals Single	360	360	360	360
Hotel Residence*** ³	no meals Single	610	610	610	610
Residence	no meals Single	260	205	195	185

One extra night is available on arrival and/or on departure at 25% of the weekly accommodation rate;

1) Specific diet weekly supplement: B&B: € 20 / HB: € 35

2) Option to book an ensuite with private sink and shower for € 20 (Single) / € 10 (Double) per week extra

3) Not including local tourist tax to be paid directly at the hotel-residence

Additional information

Included in the price: Tuition, learning material, online assessment test, Alpadia certificate, activity programme, student card, accommodation placement and taxes.

High season supplement: € 35 per week on course fees.

For stays from Sunday 18th June until Saturday 19th August 2023

Pathway programme applicants are exempt from the high season supplement on course fees

Additional Fees: Application fee: € 85, Courier fee: € 90, Weekly accident/health insurance fee: € 15, Key handover fee for early/late arrivals: € 30, Late registration fee (2 weeks or less from the starting date): € 40.

Berlin

An avant-garde capital

Learn German in Berlin and discover a capital city with a unique soul: a place where audacious architecture, cutting-edge cultural events and prodigious parties await! Berlin with its numerous parks, forests and lakes exuberantly juxtaposes avant-garde glass-panelled skyscrapers and historical buildings with large green areas that account for around a third of the city, providing plenty of perfect places to enjoy some fresh air.

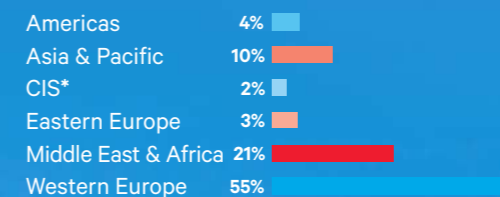
With its unrivalled cultural dynamism, the German capital has become Europe's hippest city. Home to more than 165

museums, 300 art galleries and 150 theatres, Berlin is a kaleidoscope of artistic activity, bursting with creativity and welcoming the most diverse trends.

The city centre is filled with famous historical sites, including the remains of the wall that split Berlin in two for 28 years, the Reichstag with its translucent dome, the Brandenburg Gate and Checkpoint Charlie. If shopping is more your thing, take advantage of numerous shops on Ku'damm or Friedrichstrasse. And the cherry on the cake? The city is one of the most affordable in Europe!

Key fact and Figures

Nationality mix



* Commonwealth of Independent States

95%

of exam success rate

+70

different nationalities



An avant-garde capital

In the Schöneberg district, a stone's throw from the main attractions of the capital, our language school offers students a unique opportunity to attend German classes in one of the most beautiful areas of the city.

Many cafés, bars and restaurants can be found along the lively streets of this central district, easily reachable by public transport. From the metro station or the bus stop, you will be two minutes away from the spacious and welcoming premises of our course centre.

Along with its large and bright classrooms, equipped with first-class learning facilities, the school has a conference room, an internet café as well as a spacious lounge, where students can meet up during the breaks and buy refreshments.

Accreditations & certifications



Find out more online!

- fal.cn/alpadiaberlin
- [@alpadianguageschools](https://www.alpadianguageschools.com)
- [@alpadia_language_schools](https://www.alpadia_language_schools.com)

Key facts

	School	
	Minimum age	16
	Students/class	8-14
	Year of foundation	1986
	Address	
	Hauptstraße 23/24, 10827 Berlin, Germany	
	Courses	
	In group / Private	
	Exam preparation	Goethe-Zertifikat
		TELC Deutsch / TestDaF
	Academic and Career Pathway programmes	
	Work experience programme	
	Internship programme	
	Volunteer programme	
	Accommodation	
	Host family	from age 16
	Student apartment	from age 18
	Self-catering homestay	from age 18
	Residence & hotel	from age 18
	Transfer	one-way price in € / EUR
	Berlin Brandenburg BER (30 min.)	from 135
	Berlin Train station (30 min.)	from 110

Activities in Berlin

During your German course at Alpadia Berlin, let yourself be carried away by the hustle and bustle of this vibrant capital. Every week, the school offers its students a wide range of activities and excursions, including museum visits, exhibitions, guided city tours, Biergarten evenings or Stammtisch in Schöneberg restaurants. Sports fans will be able to take part in cycling trips to the Wannsee and explore the “country” side of Berlin. At the end of the week, you will enjoy excursions to Dresden and its Zwinger, or Potsdam. During your stay, explore the capital as you go along. Fans of architecture will be bewitched by this surprising mix of modern buildings and historical monuments while history buffs will revel in visiting the city's countless museums. As for art lovers, they will be spoilt for choice in this cultural hotspot. Then, enjoy some peace and quiet in Berlin's many parks and green areas: ideal to chill out or practise sport, they give the city an exceptional quality of life. For aficionados, Berlin's nightlife is a reference in Europe. Mixing genres and atmospheres, the capital is packed with bars, restaurants and nightclubs.

B2 Guarantee

Exclusively at Alpadia Berlin, we can guarantee your progression to a B2 level if you respect the personal learning path defined for you. If you have not obtained your B2 level after your agreed course duration, we will provide up to 4 weeks of free group lessons. [Contact us for more information.](#)



Fees in € / EURO

Start dates

Elementary to advanced levels, A1 > C1: Course starts every Monday
Start dates for absolute beginners, minimum 2 weeks booking:
09.01 / 06.02 / 06.03 / 03.04 / 08.05 / 05.06 / 03.07 / 07.08 / 04.09 / 02.10 / 06.11 / 04.12.2023
Bank holidays, lessons are not substituted (school closed):
26.12.2022 - 06.01.2023 / 08.03 / 07.04 / 10.04 / 01.05 / 18.05 / 29.05 / 03.10 / 25.12 - 05.01.2024

Group courses (German lessons)

High season supplement applicable to all fees

Lessons per week – lpw	STANDARD 20 lpw	INTENSIVE 25 lpw	PREMIUM 30 lpw	COMBI 5 20+5 lpw	COMBI 10 20+10 lpw
1 week	185	235	315	510	835
2-3 weeks	180	230	295	505	830
4-7 weeks	175	210	285	500	825
8-11 weeks	170	205	275	495	820
12-23 weeks	155	195	265	480	805
24-35 weeks	140	180	255	465	790
36+ weeks	125	175	250	450	775

Private courses & online lessons: 65/lesson (1 lesson = 45 minutes)

Exam preparation course for GOETHE B2 & C1 & TELC B1, B2 & C1, TestDaF
Organised at Alpadia Berlin

Lessons per week / lpw	30 lpw	IMPORTANT INFO
4 weeks	1280	■ Available 4-5 wks prior to the exam dates. ■ Exam fees not included.

Exam – GOETHE ZERTIFIKAT Organised at the regional examination centre
Levels, fees & dates: see www.alpadia.com

Exam – TELC Deutsch & TestDaF Organised at Alpadia Berlin
Levels, fees & dates: see www.alpadia.com

Academic pathway programme

Entry: Entry level is determined by Alpadia online test when you enrol
Packages:
1. Pre-evaluation process free
2. Application process* 825
3. University placement 500

Language level	Duration	U20	U25
A1 Beginner	46 weeks	6'670	8'970
A2 Elementary	38 weeks	5'510	7'410
B1 Intermediate	30 weeks	4'950	6'150
B2 Upper Intermediate	22 weeks	4'290	5'060
C1 Advanced	12 weeks	2'340	2'760
Studienkolleg preparation course			Start dates
Introductory module	4 weeks	940	06.03 / 05.06 / 30.10.2023
Top up module	4 weeks	940	03.04 / 03.07 / 27.11.2023

*Mandatory for students who require a Study Applicant Visa

German language + work experience/internship

Requirements: Level B2 / From 18 years old / Maximum duration 3 months
Price: Course (as listed above) + € 600 placement fee

German language + volunteering

Requirements: Level B1 / From 18 years old / Duration: from 1 week to 6 months
Price: Course (as listed above) + € 85 placement fee

Accommodation		Weekly fees				From Sunday to Saturday	
		1 week	2-3 weeks	4-7 weeks	8+ weeks		
Host family ¹	B&B Single	275	260	245	235		
	Half Board Single	330	320	305	295		
	B&B Double ²	220	215	210	205		
	Half Board Double ²	285	280	260	250		
Student Apartment	no meals Single	405	325	315	305		
	no meals Double ²	320	280	270	250		
Residence	no meals Single	405	325	305	275		
	no meals Double ²	220	200	195	185		
Self-catering homestay WG	no meals Single	170	165	160	155		
	no meals Double ²						

One extra night is available on arrival and/or on departure at 25% of the weekly accommodation rate; high season supplement does not apply to the extra night.

1) Specific diet weekly supplement: B&B: € 20 / HB: € 35

2) Only available for 2 participants booking this option together, fee per participant

Additional information

Included in the price: Tuition, learning material, online assessment test, Alpadia certificate, activity programme, student card, accommodation placement and taxes.

High season supplement: € 35 per week on course and accommodation fees.
For stays from Sunday 18th June until Saturday 19th August 2023

Pathway programme applicants are exempt from the high season supplement on course and accommodation fees

Additional Fees: Application fee: € 85, Courier fee: € 90, Weekly accident/health insurance fee: € 15, Documents notarisation: € 35 per copy, Homestay address registration € 60 (min. 12 weeks), Late registration fee (2 weeks or less from the starting date): € 40.

Freiburg

The capital of the Black Forest

Located in the state of Baden-Württemberg, where Germany meets Switzerland and France, Freiburg is a multicultural city with a southern charm. Residents have a long-standing commitment to sustainable development, always favouring walking and cycling to get around the picturesque alleys and lanes of the town centre. Modern and audacious, the whole city supports innovative ideas and its location as the economic heart of a dynamic region only reinforces this open-mindedness.

Hailed as the capital of the Black Forest, the town opens onto glorious mountainous

landscapes and lush countryside along the Baden wine trail. Certainly on account of its attachment to these exceptional natural surroundings, Freiburg has become one of the greenest cities in Europe and a pioneer in solar energy and sustainable architecture.

Learn German in Freiburg and let this attractive university town, considered the warmest in Germany, enliven your senses. Stroll about the pedestrian streets of its historical town centre, treat yourself to delicious Kaffee & Kuchen on the terrace of a local café and get carried away by a whirl of music and cultural events!

Key fact and Figures

Nationality mix

Americas	10%	
Asia & Pacific	4%	
CIS*	3%	
Eastern Europe	3%	
Middle East & Africa	6%	
Western Europe	74%	

*Commonwealth of Independent States

96%

of exam success rate

+40

different nationalities

Freiburg



The capital of the Black Forest

Founded in 1972, our language school in Freiburg is established in an elegant neoclassical house located in the town centre. Here, you will find a stimulating, multicultural environment, conducive to learning German rapidly.




The course center has comfortable classrooms, a cafeteria as well as a spacious terrace and wonderful garden.

After your German classes, set off to discover the city. From the school, you will be close to the university, the numerous shops of the historical centre and its beautiful Gothic cathedral.

Accreditations & certifications



Find out more online!

-  [fal.cn/alpadiafreiburg](https://www.facebook.com/fal.cn/alpadiafreiburg)
-  [@alpadialanguageschools](https://twitter.com/alpadialanguageschools)
-  [@alpadia_language_schools](https://www.instagram.com/alpadia_language_schools)

Key facts

	School	
	Minimum age	16
	Students/class	8-14
	Year of foundation	1972
	Address	
	Werthmannstrasse 18, 79098 Freiburg, Germany	
	Courses	
	In group / Private	
	Exam preparation	TELCC Deutch
	Academic and Career Pathway programmes	
	Work experience programme	
	Internship programme	
	Volunteer programme	
	Accommodation	
	Host family	from age 16
	Residence	from age 18
	Student apartment	from age 18
	Hotel	from age 18
	Transfer	one-way price in € / EUR
	EuroAirport Basel EAP/BSL (55 min)	from 135
	Zurich Airport ZRH (2h)	from 240
	Frankfurt Airport FRA (2h)	from 315
	Freiburg Train Station	from 40

Activities in Freiburg

Your language study trip to Germany will be an opportunity to explore the youthful and dynamic university city of Freiburg. Discover the charms of its historical centre, with its welcoming cafés and restaurants and colourful marketplaces. Its little squares are as numerous as beautiful and play host to many events and festivals throughout the year. The atmosphere is relaxed and invites you to idle away in the heart of Freiburg and meet its cheerful residents.

The school organises a weekly activities programme, which will offer you the chance to explore the city by bike, watch films together and take part in Stammtisch, bringing together teachers and students for fun, friendly evenings as well as conversations in German! Take advantage of the excursions offered and visit Zurich or Strasbourg, Freiburg's neighbours in nearby Switzerland and France.

Freiburg gets even livelier at the weekend. Its plentiful college students take control of the city, creating a party ambience in its bars and parks. In this fun atmosphere and the glorious surroundings you will enjoy your stay in Freiburg to the full!



Fees in € / EURO

Start dates
Elementary to advanced levels, A1 > C1: Course starts every Monday
Start dates for absolute beginners, minimum 2 weeks booking:
16.01 / 20.02 / 20.03 / 17.04 / 22.05 / 19.06 / 17.07 / 14.08 / 18.09 / 16.10 / 20.11.2023
Bank holidays, lessons are not substituted (school closed):
26.12.2022 - 06.01.2023 / 07.04 / 10.04 / 01.05 / 18.05 / 29.05 / 08.06 / 03.10 / 01.11 / 25.12 - 05.01.2024

Group courses (German lessons) <small>High season supplement applicable to all fees</small>					
Lessons per week – lpw	STANDARD 20 lpw	INTENSIVE 25 lpw	PREMIUM 30 lpw	COMBI 5 20+5 lpw	COMBI 10 20+10 lpw
1 week	185	235	315	510	835
2-3 weeks	180	230	295	505	830
4-7 weeks	175	210	285	500	825
8-11 weeks	170	205	275	495	820
12-23 weeks	155	195	265	480	805
24-35 weeks	140	180	255	465	790
36+ weeks	125	175	250	450	775

Private courses & online lessons: 65/lesson (1 lesson = 45 minutes)

Exam preparation course for TELC B1, B2 & C1
Organised at Alpadia Freiburg
Lessons per week / lpw 30 lpw
4 weeks 1280
IMPORTANT INFO
■ Available 4 weeks prior to the exam dates.
■ Exam fees not included.

Exam – TELC Deutsch Organised at Alpadia Freiburg
Levels, fees & dates: see www.alpadia.com

Academic pathway programme
Entry: Entry level is determined by Alpadia online test when you enrol
Packages:
1. Pre-evaluation process free
2. Application process* 825
3. University placement 500

Language level	Duration	U20	U25
A1 Beginner	46 weeks	6'670	8'970
A2 Elementary	38 weeks	5'510	7'410
B1 Pre-intermediate	30 weeks	4'950	6'150
B2 Upper intermediate	22 weeks	4'290	5'060
C1 Advanced	12 weeks	2'340	2'760

*Mandatory for students who require a Study Applicant Visa

German language + work experience/internship
Requirements: Level B2 / From 18 years old / Maximum duration 3 months
Price: Course (as listed above) + € 600 placement fee

German language + volunteering
Requirements: Level B1 / From 18 years old / Duration: from 1 week to 6 months
Price: Course (as listed above) + € 85 placement fee

Accommodation		Weekly fees				From Sunday to Saturday	
		1 week	2-3 weeks	4-7 weeks	8+ weeks		
Host family*	B&B Single	280	260	245	235		
	Half Board Single	335	320	305	295		
	B&B Double	225	220	210	205		
	Half Board Double	290	280	275	260		
Student Apartment	no meals Single	425	340	315	290		
	no meals Double	335	295	280	260		
Residence	no meals Single	425	340	315	290		

One extra night is available on arrival and/or on departure at 25% of the weekly accommodation rate; high season supplement does not apply to the extra night.

* Specific diet weekly supplement: B&B: € 20 / HB: € 35

Additional information

Included in the price: Tuition, learning material, online assessment test, Alpadia certificate, activity programme, student card, accommodation placement and taxes.

High season supplement: € 35 per week on course and accommodation fees.
For stays from Sunday 18th June until Saturday 19th August 2023
Pathway programme applicants are exempt from the high season supplement on course and accommodation fees

Additional Fees: Application fee: € 85, Courier fee: € 90, Weekly accident/health insurance fee: € 15, Documents notarisation: € 35 per copy, Homestay address registration: € 60 (min. 12 weeks), Key handover fee for early/late arrivals: € 30, Late registration fee (2 weeks or less from the starting date): € 40.



General Information

Collective Transfers

CHF = SWISS FRANCS / € = EUROS

Our transfers are shared transfers with no more than 45 minutes waiting time.
The price for 2 or 3 persons is only available for students booking together and with the same address.

ADULT SCHOOL	ONE WAY PRICE PER PERSON	1 PERSON	2 PERSONS	3 PERSONS
MONTREUX	Geneva GVA / Geneva Train station*	CHF 270	CHF 190	CHF 170
	Zürich ZRH / Zurich Train station*	CHF 910	CHF 630	CHF 450
LYON	Lyon - LYS	€ 160	€ 120	€ 100
	Lyon Train station*	€ 70	€ 35	€ 25
BERLIN	Berlin Brandenburg BER	€ 135	€ 90	€ 75
	Berlin Train station*	€ 110	€ 70	€ 65
FREIBURG	EuroAirport Bâle/Mulhouse EAP/BSL/MUL	€ 135	€ 120	€ 110
	Zürich ZRH	€ 240	€ 230	€ 225
	Frankfurt FRA	€ 315	€ 310	€ 300
	Freiburg Train station*	€ 40	€ 20	€ 15

* For 3 students or more, please inform us of the amount of luggages.

Accommodation Cleaning Fee & Deposit Payments

CLEANING FEE is invoiced at the time of booking per person; the cleaning fee is non-refundable.

DEPOSIT FEE

Homestay: ALPADIA doesn't require a deposit fee for Homestay accommodation, however on occasion some families may ask for it directly to the student.

Apartments / Residences / Studio: due in cash per person on arrival at the school on DAY 1; the deposit payment is fully refundable (assuming no damages were caused) within 21 business-days after the student's departure; refundable by bank wire transfer.

KEY HANDOVER FEE A Key Handover fee will be applied if you arrive outside of the accommodation's standard check-in/out schedule.

ADULT SCHOOL	ACCOMMODATION OPTIONS	MINIMUM AGE	CLEANING FEE	DEPOSIT FEE	KEY HANDOVER FEE
MONTREUX	Homestay	16+	-	CHF 50	-
	Student Apartments Les Alpes & Riviera Studio du Lac	18+	CHF 60	CHF 200	-
	Student Residence Aigle & Vevey	16+	CHF 60	CHF 200	-
LYON	Homestay	16+	-	€ 50	-
	Hotel Residence** Saxe Gambetta & St. Nicolas Hotel Residence*** Odalys	18+	-	€ 150	-
	Student Apartment Tempo & Villeurbanne	18+	€ 40	€ 150	-
	Student Residence La Guillotiere	18+	€ 70	€ 450	€ 30
	Student Residence Tempo	18+	€ 70	€ 450	-
BERLIN	Homestay	16+	-	€ 50	-
	Student Apartment Akazienstrasse & Pankstrasse Student Residence David Friedlander Haus	18+	€ 45	€ 150	-
	Self catering homestay WG	18+	-	€ 150	-
FREIBURG	Homestay	16+	-	€ 50	-
	Student Apartment Erwinstrasse, Kronenstrasse & Laimacker	18+	€ 45	€ 150	-
	Student Residence	18+	€ 45	€ 150	€ 30

While we make every effort to ensure the accuracy of prices for our services, prices are subject to change without notice.

Terms & conditions

1. Registration and confirmation

All bookings received by Alpadia S.A. ("Alpadia") by post, e-mail or telephone and online registrations will be deemed to be valid. By signing and returning the online application form the participant is agreeing to enter into a binding contract with Alpadia. Confirmation of the booking will be made within a maximum of 5 working days following receipt of a valid booking (if the course booked is available). Once this booking confirmation has been issued, a legally binding contract based on these terms and conditions will be formed between the participant and Alpadia subject to the participant meeting all applicable immigration requirements. Where the registered person is an adult, that person will become a contract partner of Alpadia. Where the registered person is not an adult, their parent/guardian will become the contract partner of Alpadia. In that event, the parent/guardian must sign the contract and give their correct address and contact details. The person who is contractually registered to a language course will become a "participant", designated as such below. The person who signs the contract (either the participant themselves or, where the person is a minor, their parent/guardian) will be identified as a "contract partner", designated as such below.

2. Information provided at the time of registration

The contract partner expressly declares that the information provided at the time of registration for a language course is true and accurate. Any inaccurate information or omission may lead to immediate expulsion from the course (for example, if an "absolute beginner" overestimates their level of linguistic ability in order to be able to start a course on a date other than the official commencement date for "absolute beginners"). In that event, the costs of the course will not be refundable, either in whole or in part. At the time of enrolment, participants are required to take a compulsory language test online after confirming their booking. Alpadia reserves the right to refuse the booking if the participant fails to take the compulsory language test. Alpadia cannot guarantee that a participant will be placed in a class at their appropriate aptitude level if the participant does not take the online placement test.

3. Application fees

Alpadia will charge the following Application Fee for each booking: CHF 120 (for bookings in Switzerland) or € 85 (for bookings in France and Germany). This fee is non-refundable. In the event of late registration (being two weeks or less before the commencement date of the relevant language course), participants will be charged an extra fee of CHF 45 (for bookings in Switzerland) or € 40 (for bookings in France and Germany) for express processing of their booking.

4. Changes to course

Any change to school location, course downgrade, change in weeks booked or removal of additional service will be charged at € 70 / CHF 80 per change. No charge for upgrades. For postponement related changes, please refer to postponement policy. Alpadia is not obliged to fulfil any change request. If changing to a location (or changing course) where fees are lower prior to the course start date, the difference in fees will be refunded. If the change occurs after the course commencement date, there will be no refund of the difference. If changing to a more expensive location or course, the difference in fees will be charged. All changes are subject to Alpadia's discretion and require approval of the Customer Care team. Participants will not be charged a change fee if they extend their course, but late homestay extensions may require a re-placement fee.

5. Postponement Policy

- Postponements will only be made on receipt of a valid written student request.
- Bookings may be postponed a maximum of two times within one year of the original booking date.
- Bookings may only be postponed by up to 6 months at a time and up to one year in exceptional circumstances.
- Your booking will be postponed honoring the original fees you have paid.
- Only one tuition promotion may be used at any time; any previously expired promotions will no longer be valid at the time of postponement; a current promotion, valid at the time of postponement, may be applied.
- Any additional incurred actual costs for accommodation postponements, regardless of notice provided, will also be charged.

- In all cases where a visa or visa support documentation has been issued, the relevant immigration authorities will be informed.
- Postponements made less than 7 days before the arrival date on the Booking Confirmation Form, including failure to show up, will incur a fee of one week's accommodation and one week's tuition fee.

6. Conditions of payment

Fees will become payable immediately on receipt by the participant/contract partner of their confirmation of booking as follows:

- Deposit payment of 10% of the total invoice or a minimum fee of € 250 or CHF 200 (whichever is more); and
- Payment of the premium for the health insurance (where such policies have been taken out by the participant).

The balance of the total fees for the course, accommodation and any extra activities must be paid at least four weeks prior to the commencement date of the language course. Neither the course nor the accommodation will be deemed to have been paid for unless the relevant amount has been received into the account details provided by Alpadia upon confirmation of registration.

In the event of a booking made within 2 weeks of the commencement date of the language course, the contract partner acknowledges that the

full amount is due at registration.

Payment of fees can be made online by credit card through Flywire or by bank transfer. Details of how to pay will be provided at the time of booking.

7. Payment period

In the event that the payment periods specified by Alpadia in the confirmation are not complied with, the contract partner will be held liable. In such circumstances, Alpadia reserves the right to refuse the participant entry to the course. No claims will be accepted by Alpadia that arise from the contract partner's failure to comply with the payment periods communicated to the contract partner.

8. Proof of payment

Participants may be asked to provide documentary proof of payment of the full fee for their course and accommodation either before or on commencement of the language course. Failure to do so may mean that entry to both the course and the accommodation will be refused. In the case of late registration, Alpadia will ask for proof before sending the pre-arrival documentation.

9. Cancellation – standard policy

This Standard Cancellation Policy shall apply except where varied by the specific provisions in clause 9 below.

Cancellation Notice	Charges & Refunds
Written cancellation notice provided 22 days or more before the arrival date listed on the booking confirmation form	<p>For Language Schools: You shall be refunded: 100% of the tuition and accommodation fee less the amounts set out below: (a) Application Fee (CHF 120 (for bookings in Switzerland) or € 85 (for bookings in France and Germany)) (b) Any non-refundable Insurance Fee (c) Administration Fee (CHF 165 or € 110) (d) Courier Fee (CHF 120 or € 90) (e) Bank Charges (CHF 45 or € 40) (f) Transfer Fees</p> <p>For University Pathway Programs (UPP): You shall be refunded: 100% of the tuition and accommodation fee less the amounts set out below: (a) Application Fee (CHF/€ 825) (b) University Placement Fee (CHF/€ 500) (c) Any non-refundable Insurance Fee (d) Administration Fee (CHF 165 or € 110) (e) Courier Fee (CHF 120 or € 90) (f) Bank Charges (CHF 45 or € 40) (g) Transfer Fees</p>
Written cancellation notice provided less than 21 days before the arrival date listed on the booking confirmation form, including failure to show up	<p>For Language Schools: You shall be refunded: Tuition and accommodation fees less the amounts set out below: (a) 1 week's tuition fees (b) 1 week's accommodation fee (c) Application Fee (CHF 120 or € 85) (d) Any non-refundable Insurance Fees (e) Administration Fee (CHF 165 or € 110) (f) Courier Fee (CHF 120 or € 90) (g) Bank Charges (CHF 45 or € 40) (h) Transfer Fees</p> <p>For University Pathway Programs (UPP): You shall be refunded: 100% of the tuition and accommodation fee The following items shall not be refundable: (a) Application Fee (CHF/€ 825) (b) University Placement Fee (CHF/€ 500) (c) Any non-refundable Insurance Fee (d) Administration Fee (CHF 165 or € 110) (e) Courier Fee (CHF 120 or € 90) (f) Bank Charges (CHF 45 or € 40) (g) Transfer Fees</p>
On written notification of a visa rejection and receipt of supporting documentation	<p>For Language Schools: In the event that a participant is refused a visa and a copy of the original refusal document issued by the Swiss/German/French Embassy (as applicable) is supplied, Alpadia undertakes to reimburse the whole amount paid, less less the amounts set out below: (a) Administration Fee of CHF 165 or € 110; (b) Bank Charges of CHF 45 or € 40; and (c) Courier Fee of CHF 120 or € 90</p> <p>For University Pathway Programs (UPP): In the event that a participant is refused a visa and a copy of the original refusal document issued by the Swiss/German/French Embassy (as applicable) is supplied, Alpadia undertakes to reimburse the whole amount paid, less: (a) Application Fee (CHF or € 825)</p>

The amounts to be paid by the contract partner on cancellation must be received no later than 10 days following receipt of the cancellation

SWITZERLAND, FRANCE & GERMANY

invoice.

All refunds must be paid to the original payer's bank account or credit card and cannot be made to any other person.

10. Cancellation - Distance Selling Regulations

'Distance Contract' means a distance contract or an off-premises contract as defined in the Consumer Contracts (Information, Cancellation and Additional Charges) Regulations 2013 (as amended from time to time).

In the event of a Distance Contract, participants who are EU citizens shall have the right to cancel the legally binding contract formed in accordance with paragraph 1 of these Terms and Conditions if the participant/contract partner gives notice of cancellation to Alpadia **within the fourteen (14) calendar day** period beginning on the day on which the booking confirmation was issued by Alpadia.

- If a participant exercises their right to cancel during this fourteen (14) day period, they will receive a full refund of all amounts already paid by the participant less any fees charged for services already performed by Alpadia.
- If the participant has already commenced studying with Alpadia during the fourteen (14) day period, they must pay a reasonable charge calculated by Alpadia for the period of study undertaken.
- To exercise the right to cancel under the EU distance contract terms, the participant must inform Alpadia of the participant's decision to cancel this agreement by email to: bookings@alpadia.com.

11. Cancellation insurance

Alpadia recommends that contract partners take out a cancellation insurance policy. In the event that the participant has taken out cancellation insurance and then cancels their course, they will be responsible for notifying their insurers. Under no circumstances will a cancellation insurance policy render Alpadia liable for non-reimbursement of a course.

12. Termination

'Termination' means stopping or leaving all or part of the course or courses booked, or reduction in weekly lessons, including extensions, once the first course has started.

When determining the number of weeks completed, a partial week will be counted as a whole week, provided the student was present at least one day during the scheduled week. Used weeks of discounted tuition and accommodation packages will be charged at the full brochure weekly rate when any refund is calculated.

In all cases additional service charges (e.g. airport transfers, courier fees, application fees, medical insurance, program supplement fee, etc.) are non-refundable and written notification of termination must be given to the Customer Care team. Students who terminate their program may not be eligible to receive an Alpadia certificate and will not be allowed to stay in Alpadia accommodation.

Tuition

Students wishing to terminate must give 4 weeks' written notice to the Student Support Manager so we may refund remaining tuition fees. Tuition fees are non-transferable to other students.

Accommodation

In order to terminate their accommodation contract, students must give at least 4 weeks' notice in writing to the Student Support Service. The student acknowledges that some hostels and apartments require more notice and may charge a higher cancellation fee - where this is the case it will be notified to the student.

A refund will be made of the unused accommodation fee less the applicable notice period of 4 weeks and the applicable change fee. Refunds will be calculated based on the total accommodation weeks booked, including periods of extension. Used weeks of discounted accommodation packages will be charged at the full brochure weekly rate when any refund is calculated.

Some residential options may have additional terms and conditions relating to reservation cancellation, including minimum notice period; these will be included in any refund calculation.

All refunds must be paid to the original payer's bank account or credit card and cannot be made to any other person.

13. Passports and visas

The participant will be responsible for complying with the security regulations, the regulations governing the obtaining of a visa, and the health regulations required to enter and stay in Switzerland/Germany/France (as applicable). Under no circumstances will Alpadia be held liable for any notice of refusal to enter or stay in Switzerland/Germany/France given to a participant. Information relating to the regulations governing security, health and obtaining a visa can be obtained from the Swiss/German/French Embassy or Consulate in the participant's home country. No reimbursement will be made, either in full or in part, in the event that a participant is refused permission to enter or stay in Switzerland/Germany/France as a result of their own fault or conduct. Alpadia will provide a letter of invitation to the participant to assist with the visa application following receipt of all the costs of the language course from the participant/contract partner.

14. Accident/health insurance

Every participant will be solely responsible for obtaining accident and health insurance cover valid for the country in which they intend to stay for the whole duration of their stay. This insurance is mandatory during a participant's study at Alpadia and can be purchased through Alpadia or other insurance providers. In the event that any participant does not have such cover at the time of registration, an appropriate insurance policy covering these risks can be purchased from Alpadia if requested.

Terms & conditions

SWITZERLAND, FRANCE & GERMANY

Step Two

If you are not happy with the answer provided by these staff members, then please raise your concerns with the Centre Manager.

Final Step

If you are still not satisfied with our responses, then you may wish to raise your complaint with the professional organisation that accredits the school. The contact details are below:

Eaquals

29/30 Fitzroy Square,

London, W1T 6LQ,

United Kingdom

27. Changes affecting prices, dates or services

Until such time as a participant receives the confirmation of registration, Alpadia may change the dates and prices of language courses published on the internet, brochure or any other communication tools at any time. Following confirmation of registration between Alpadia and the participant, Alpadia may change its programme of services, provided that the changes are minor, unavoidable and do not in any way adversely impact the teaching services to be provided to the participant. In the event that the "key" services provided by Alpadia are affected by major changes, participants may withdraw or apply to join a different course of the same value, if Alpadia is in a position to provide this. Alpadia must notify participants of any changes immediately and participants must notify Alpadia as soon as possible after receipt of such notification of their intention to exercise their rights set out in this clause.

28. Minimum number of participants

In the event that it is not possible to achieve the minimum number of participants required for a language course (4 persons for a group course), Alpadia will notify the participant and contract partner at least one week prior to the commencement date of the course. If Alpadia is unable to provide an alternative course, Alpadia will undertake to reimburse all fees paid to date by the participant/contract partner. Under no circumstances will Alpadia pay compensation for any inconvenience or loss of time. In the event that none of the courses are appropriate for the participant's level of ability, Alpadia reserves the right to substitute the group course for private tuition and adapt the number of lessons accordingly. The number of hours of private tuition will depend on the amount paid by the participant and the number of participants.

29. Activities

Depending on the weather conditions or other circumstances beyond the control of Alpadia and its organisation, Alpadia reserves the right to cancel one or more of the scheduled activities available at each school. In that event, Alpadia undertakes to substitute the cancelled activities with a suitable alternative activity.

30. Public holidays

The contract partner acknowledges that schools are generally closed on local public holidays, and acknowledges that this will not give rise to any claim for compensation against Alpadia for missed lessons or otherwise.

31. Force majeure:

Alpadia shall not be in breach of these terms and conditions nor liable for delay in performing, or failure to perform, any of its obligations under this agreement if such delay or failure result from events, circumstances or causes beyond its reasonable control including but not limited to: fire; natural disaster; acts of government; failure of suppliers or sub-contractors; labour disputes or civil unrest; criminal, terrorist or threatened terrorist activities of any kind; pandemics and other public health emergencies; any negligent or wilful act or failure to act by any third party; or any other cause beyond the direct control of Alpadia (each a "Force Majeure Event").

Where any course is cancelled by Alpadia as a result of a Force Majeure Event, it is acknowledged that:

- Alpadia has the right to retain a pro-rated amount of any fees paid where services have been partially provided. Any fees retained will be proportionate to the services provided;
- Alpadia shall be entitled to deduct any irrecoverable fees it suffers from the amount of any refund, for example cancellation fees or similar;
- Alpadia shall have the right to provide a substitute course to the cancelled course, including online and virtual alternatives; and
- Any third party services procured by Alpadia on behalf of the participant, including but not limited to accommodation, transfers or insurance shall remain subject to the terms of the respective provider's terms and Alpadia shall not be liable for such third party services or any act or omission of such third party.

32. Liability

To the extent permitted by law, the liability of Alpadia, its group companies, their directors, officers, employees, affiliates, agents and partners with respect to losses arising from negligence, breach of contract or otherwise will be limited in all circumstances to the full amount paid to Alpadia for the particular language course. Such companies and persons will in no circumstances have any liability for indirect or consequential losses or damages. Under no circumstances can Alpadia be held liable for any loss resulting from illness, accident or inconvenience caused by poor service provided by any agent appointed by Alpadia. Furthermore, Alpadia will not be responsible for the loss of any valuables, personal items, money, or other possessions unless such losses arise from the gross negligence of Alpadia.

33. Safety and security

Alpadia is authorised to take all reasonable action as required to ensure the well-being, safety and good health of the participants. Alpadia is also entitled to take all necessary measures to provide a participant with any

appropriate medical care in the event of necessity. Any costs arising from such medical attention will be borne by the participant, or their parent/guardian if they are a minor. A written release/authorisation signed by a participant's parent or guardian will be required for minors.

34. Protection of personal data

Your privacy is important to us. It is important that you read our privacy policy which informs you about how we process your personal data. This can be found at: <https://www.alpadia.com/en/privacy.htm>.

35. Promotional material

The participant (or where applicable, their parents or guardian) agrees that the participant's photographs, videos, artwork or other works as well as recorded or written testimonials and details of the participant's accomplishments may be used worldwide by Alpadia S.A. or by a third party agent of Alpadia S.A., for promotional purposes including in its printed and online marketing materials and on any social media network without further consent or notifications. Participants may be photographed and/or filmed during their language course with Alpadia S.A. and they agree to this material being used for Alpadia S.A. worldwide promotional purposes, both printed and online. The participant, or their parent or guardian, also agrees to give consent to Alpadia S.A. to store or transfer across international borders, copies of the participant's images, videos and testimonials solely for the promotional purposes outlined above. These terms and conditions will be deemed non-applicable only if the participant or their parent or guardian specifically withdraws their consent, in writing, at any time after registration.

36. Applicable law and jurisdiction

Swiss law will apply exclusively to the contractual relationship between Alpadia and the participant and/or contract partner. Jurisdiction will lie with the courts of Montreux, Switzerland.

37. General

As a member of the Kaplan group of companies, Alpadia is subject to laws imposed by various jurisdictions on conducting business with sanctioned parties and countries. It is our policy to fully comply with applicable sanction restrictions, including those imposed by the United States, United Kingdom, Switzerland and the European Union. While we are not prohibited from transacting with individuals with a connection to a sanctioned country, we need to ensure that no part of the transaction will be in contravention of US sanctions laws under a series of prescribed compliance checks, including verification as to source of funding and persons providing such funding, before any monies or services can be transacted.

How to enrol



1 Select the dates of the language programme you wish to book



2 Insurance

Make sure to read carefully through the “insurance” clauses of our Terms and Conditions. Students who enrol for a language study programme with us must have a health & accident insurance which is valid in Switzerland, France and Germany. Health and travel insurance may be taken out during your enrolment with Alpadia. Cancellation insurance may be taken out with an external provider.



3 Enrol

Complete all the relevant sections on the **online form** of our website.



4 Booking

Your study advisor will first make sure the dates you have selected are available for your stay and will contact you in case anything should be amended. Then within 48 hours you will receive your booking confirmation and an invoice with the details of the language trip, programme chosen, any special requirements and method of transport selected for arrival and departure.



5 Payment

A payment of 10% of the total invoice or a minimum fee of € 250/CHF 200 (whichever is more) will be required before you receive the booking confirmation. The remaining payment would be due 4 weeks before your start date unless you need to apply for a visa. In this case, the whole payment would be needed before your visa appointment at the embassy.



6 Apply for a visa (if required)

Should you require an official letter of invitation from Alpadia in order to apply for a visa, we will prepare such a letter for the Swiss, French or German embassy in your country upon receipt of payment. Please let us know whether you require such a letter.



7 Online placement test

The online placement test needs to be taken 4 weeks before arrival. The link to access it has been sent to you in your booking confirmation email.



8 Pre-arrival information

At least 2 weeks before the start of the programme, our team will send you precise details about your course, accommodation and anything related to your arrival.



9 Welcome on board!

Your journey at Alpadia starts here!

Booking with your local agency

If our school has been recommended to you by an agency, please hand in your registration form to the agent, who will attend to all other formalities for you. The agency will forward your enrolment to us and answer any questions you may have.



Berlin is a wonderful city! There's very good food. The school is very well organised and the lessons are made in a very clear manner that gives motivation to learn German. Alpadia school is great!

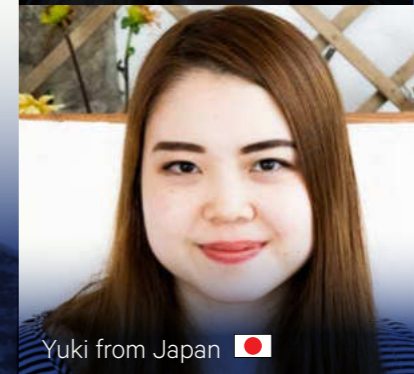
Giordano from Italy 🇮🇹



Ana-Paula from Ecuador 🇪🇨



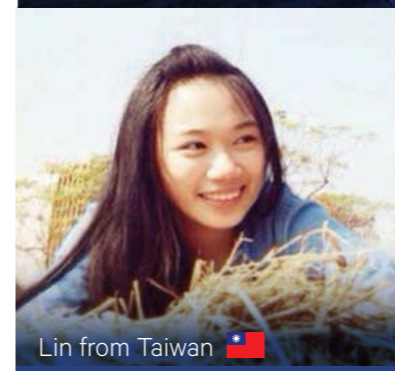
Lorenzo from Brazil 🇧🇷



Yuki from Japan 🇯🇵



Giulia from Spain 🇪🇸



Lin from Taiwan 🇹🇼

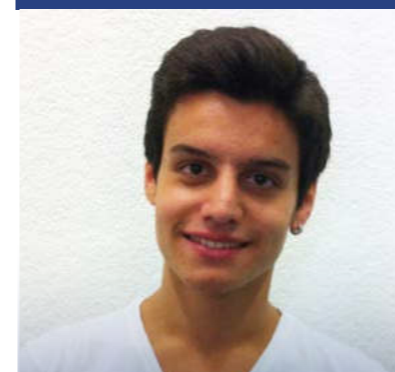


Pernille from Denmark 🇩🇰

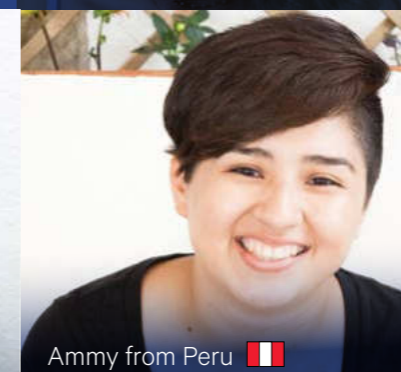


At **Alpadia Freiburg** there is a very nice atmosphere. The apartment is perfect, situated in a quiet area and at the same time in the city center. I really like the language course. After three months now I can say, that I want to stay longer.

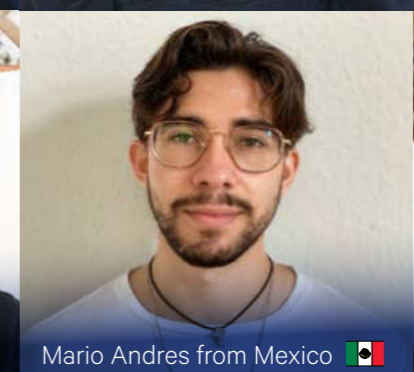
Ismet from Switzerland 🇨🇭



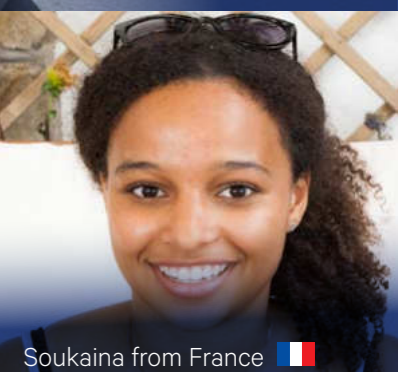
Dogan from Turkey 🇹🇷



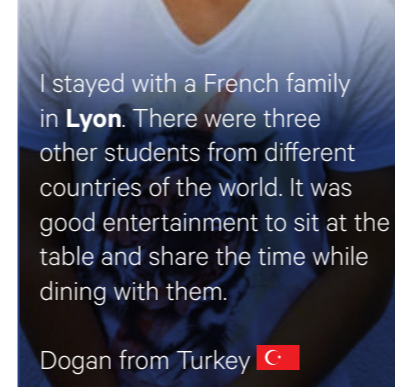
Ammy from Peru 🇵🇪



Mario Andres from Mexico 🇲🇽

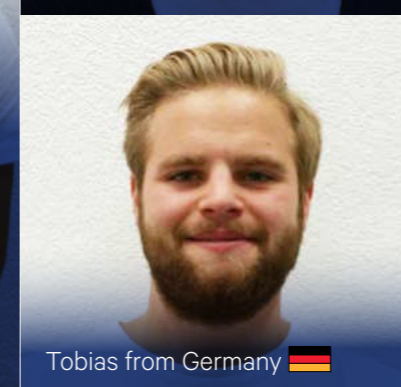


Soukaina from France 🇫🇷

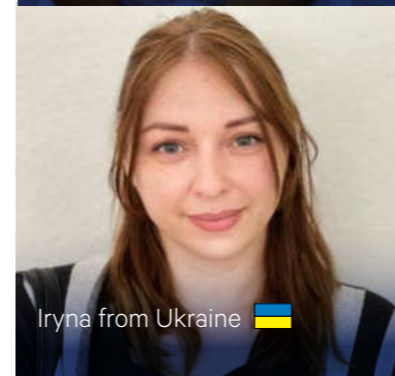


I stayed with a French family in **Lyon**. There were three other students from different countries of the world. It was good entertainment to sit at the table and share the time while dining with them.

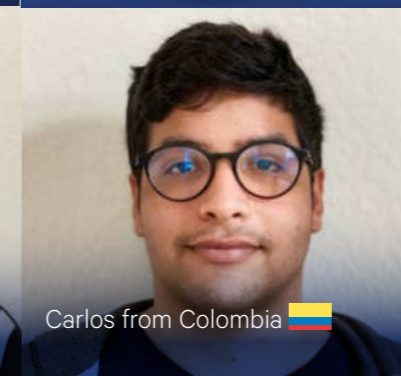
Dogan from Turkey 🇹🇷



Tobias from Germany 🇩🇪



Iryna from Ukraine 🇺🇦

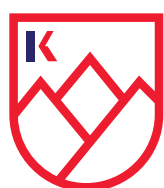
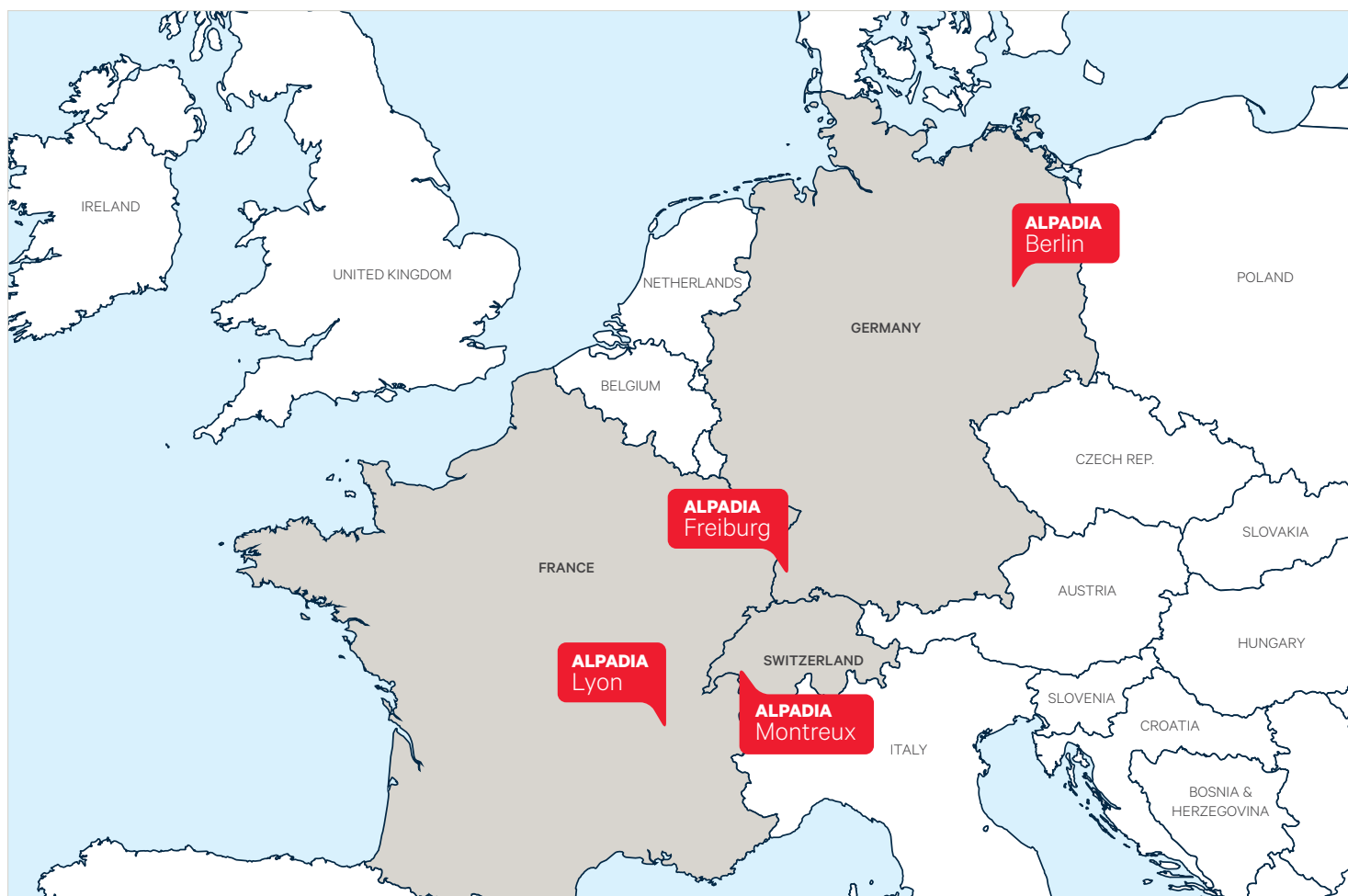


Carlos from Colombia 🇨🇴



The teaching offered by Alpadia allowed me to quickly overcome my shyness and break down the linguistic barrier so that I could fully take advantage of my language learning experience in **Montreux**.

Linda from Russia 🇷🇺



ALPADIA
LANGUAGE SCHOOLS
by Kaplan International

KAPLAN INTERNATIONAL
LANGUAGES

We are a leading Swiss language education group based in Montreux, Switzerland.

Alpadia Language Schools by Kaplan International Languages offers year-round French and German courses in Switzerland, Germany and France for students 16+ and English, French and German language courses for juniors and teens in Switzerland, Germany, France and United Kingdom. Initially established in 1996, and now larger than ever, our mission is to encourage language development through immersion and to expand the horizons of our students, **to inspire their future.**

Accreditations & certifications



Follow us



Contact us

+41 21 621 88 88

info@alpadia.com

www.alpadia.com